

A close-up photograph of a brown cow's face, focusing on its eyes and the base of its horns. The cow's eyes are dark and almond-shaped, and the horns are thick and dark, curving downwards. The background is the cow's brown fur, which has a fine, textured appearance.

*Second Annual*  
**FLYING S HEREFORDS**  
*Line One*  
PRODUCTION SALE

**Tuesday, March 22, 2016**

*12 noon at the Ranch • Paluxy, Texas*

*Elite Line One Horned Herefords*

Welcome to  
Flying S Herefords!



Second Annual

# Line One

PRODUCTION SALE

**Tuesday, March 22, 2016**

*12 noon at the Ranch • Paluxy, Texas*

*70 Line One Hereford Lots Sell*

**34 Powerful Line One Bulls • 25 Fall Long Yearlings & 9 Early Spring Yearlings**

**1 Choice Donor Flush • 1 Proven Donor Dam • 2 Pick of the Flush Yearling Heifers**

**7 Yearling Open Heifers • 7 Fall Bred Heifers**

**4 Fall 3-in-1 Heifer Calf Pairs • 14 Fall Bred Cows**





# FLYING S HEREFORDS

James Strode 214.533.9669 • James@flyingsherefords.com  
Jim Strode 214.801.9669 • Rick Wilson 817.219.2225  
www.flyingsherefords.com

Welcome to Flying S Herefords!

We would like to invite you to join us for our Second Annual Production Sale here at the ranch. It has been another remarkable year to be in the cattle business, and the demand for top quality Line One Herefords continues to grow. The Flying S Herefords Ranch is located in Paluxy, Texas, southwest of Fort Worth.

**Our mission at Flying S Herefords is to produce elite Line One Horned Herefords.** Over the past years we have invested in the top bloodlines of the finest Line One Herefords in America from Holden Herefords and Cooper Herefords. Our focus is on every aspect of the Hereford breed. We believe in a long-lasting, performance Line One breeding program to increase the predictability of our cattle for our customers. In order to succeed in Line One breeding, one must continue to introduce cattle with superior genetics. Flying S Herefords focuses heavily on the maternal abilities in our breeding program. We have a strict culling program that enables us to produce and retain only the genetically superior animals. Cows are culled based on fertility, performance, soundness, disposition and udder quality. We are active members in the Texas Hereford Association along with the American Hereford Association; we are involved with the TPR program of the American Hereford Association and are active members in the Whole Herd Reporting Program.

It is a great pleasure to be able to offer such an outstanding set of bulls and females. This group of bulls represents the best of our fall 2014 and spring 2015 calf crops. They are all sired by top trait leading, high quality Line One bulls. They are a balanced trait set of bulls that combine uniformity, pigment, maternal strength, thickness, performance, fleshing ability and carcass with eye appeal. All bulls and heifers sell with performance and ultrasound data and have been DNA parentage verified as well as have been tested IE Free, HY Free and Dilutor Free. **All bulls have been trich and semen tested.**

Like last year, we will have three added special feature lots.... We are offering two "Pick of the Flush" lots out of our top genetics. In the first "Pick of the Flush," there are three fall bred heifers out of our HH Miss Advance 7142T donor and sired by the HH Advance 221 sire. In the second "Pick of the Flush," there are two fall bred heifers out of our CL 1 Dominette 606S donor and sired by HH Advance 221. Another "Special Feature" lot we add this year is a Choice Flush between four of our most elite donors. In addition, we are selling top-notch fall bred heifers, an outstanding set of open yearling heifers, fall bred pairs with heifer calves at side, a set of fall bred top quality cows and an elite proven donor.

All sale cattle and the cow herd will be on display March 21st and 22nd up to sale time. On Monday, the 21st, we will have drinks and snacks available along with cow herd tours in the afternoon. On sale day, snacks and lunch will be provided, catered by Hard Eight BBQ. Lunch will be served at 11:00 a.m., and the sale starts promptly at 12:00 noon.

Thank you for taking the time and having an interest in our program—we look forward to seeing y'all. If you have any questions or we can be of any help, please feel free to call us anytime.

*Jim & Rosemary Strode & Family*  
*James, Madison & Stella Strode*



## Accommodations

- Best Western Inn & Suites, Granbury .....817.573.4239  
 1517 Plaza Dr. N., Granbury, TX 76048  
 Hampton Inn & Suites, Stephenville .....254.918.5400  
 910 S Harbin Dr., Stephenville, TX 76401  
 La Quinta Inn & Suites, Glen Rose .....254.898.0679  
 101 West Bo Gibbs Blvd., Glen Rose, TX 76043

## Air Travel

The ranch is about a two-hour drive from the Dallas/Fort Worth International Airport and Love Field. Please let us know if you need assistance with travel arrangements.

## Sale Manager



Dustin N. Layton  
 405.464.2455  
 laytond@yahoo.com  
 www.laytonauction.com

## Sale Staff

- Dustin Layton, Auctioneer .....405.464.2455  
 Juston Stelzer, Hereford World .....817.992.7059  
 Phil Stoll, Weekly Livestock Reporter .....817.366.7332  
 Jack Chastain, Texas Hereford .....817.821.3544  
 Chisolm Kinder, Oklahoma Cowman .....405.747.4683  
 Jim Boyd, Boyd Enterprises .....325.669.4784

## Sale Terms & Conditions

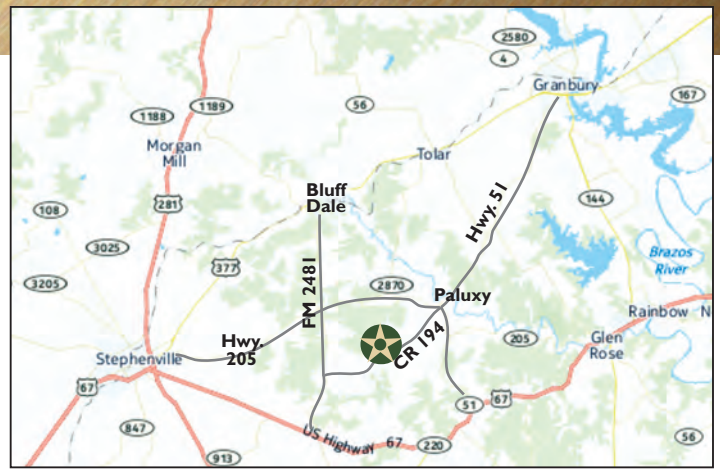
Cattle sell under the recommended Sale Terms and Conditions of the American Hereford Assn.

## Herd Health

Cattle will sell with proper health certificates for immediate interstate shipment.

## Livestock Insurance

Insurance for your purchases will be available at the clerk's desk.



*Flying S Herefords is located 1 hour southwest of Fort Worth, between Glen Rose and Stephenville.*

Go southwest of Granbury on Hwy. 51, then 5.1 miles west of the intersection of Hwys. 205 and 51 on County Road 194, or 3.8 miles east of FM 2481 on CR 194. Watch for our signs!

GPS address: 7955 CR 194, Bluff Dale, TX 76433

## Absentee Bidding

Watch and bid live on Superior!  
 Dish Channel 232 – phone 800.431.4452  
 Register to bid online or over the phone at [www.superiorlivestock.com](http://www.superiorlivestock.com)



Join us for lunch at 11 a.m.

Catered by Hard Eight BBQ



Announcements made sale day from the auction block will take precedence over statements printed in the sale catalog or other advertising. We reserve the right to withdraw any sale lot not meeting our specifications prior to sale time. All persons who attend the sale do so at their own risk. Neither the owners, the management, nor any other person connected with the sale assume liability, legal or otherwise, for accidents or loss of property.



James, Jim, Rick, Miguel, Manuel, Baldy & Tim

# FLYING S HERD SIRES



**HH Advance 0081X ET**

*Ref.* **0081X**  
{CHB,DLF,HYF,IEF}

**HH Advance 0081X ET**

Bull — Jan. 8, 2010 — Reg. 43073921

L1 DOMINO 03571 {CHB}  
**HH ADVANCE 7034T ET** {CHB}  
HH MISS ADVANCE 1088L {DOD}

CL 1 DOMINO 2136M  
**HH MISS ADVANCE 5139R ET**  
HH MS ADVANCE 8037H

L1 DOMINO 01384 {CHB}  
L1 DOMINETTE 00532  
CL 1 DOMINO 824H {SOD}  
HH MS ADVANCE 8016H  
CL 1 DOMINO 9126J 1ET {SOD,CHB}  
CL 1 DOMINETTE 8124H 2ET  
CL 1 DOMINO 500E {SOD}  
HH MISS ADVANCE 687F

CED	BW	WW	YW	MILK	M&G	REA	MARB	CHBS	ATA GE-EPD
+4.2	+2.2	+57	+84	+34	+62	+19	+04	+24	

0081X is a top notch herd bull that combines all the industry demands into a great package. He is deep ribbed and extra thick with outstanding length of body and tons of pigment. 0081X is out of the Holden 5139R cow that topped their 2010 female sale at \$40,000 to Haxton Hoffman and then topped Hoffman's 2013 fall sale at \$175,000. 5139R has produced almost \$1 million in progeny sales.



**HH Advance 1059Y**

*Ref.* **1059Y**  
{DLF,HYF,IEF}

**HH Advance 1059Y**

Bull — Jan. 6, 2011 — Reg. 43173094

HH ADVANCE 3113N 1ET {SOD,CHB}  
**CL 1 DOMINO 7128T 1ET**  
CL 1 DOMINETTE 0112K 1ET

CL 1 DOMINO 320N {CHB,SOD}  
**HH MISS ADVANCE 7239T**  
HH MISS ADVANCE 1088L {DOD}

L1 DOMINO 99496 {SOD}  
HH MS ADV 875H 1ET  
CL 1 DOMINO 5131E {SOD}  
CL 1 DOMINETTE 411  
CL 1 DOMINO 019K {SOD}  
CL 1 DOMINETTE 996J 1ET  
CL 1 DOMINO 824H {SOD}  
HH MS ADVANCE 8016H

CED	BW	WW	YW	MILK	M&G	REA	MARB	CHBS	ATA GE-EPD
+0.5	+1.9	+49	+79	+32	+56	+32	+17	+26	

1059Y is a beautiful fronted bull with tremendous length of body, muscle expression and eye appeal deluxe. He is very clean made, correct and 100% pigmented along with having excellent individual performance and EPDs. His dam is an extra fancy 320 daughter with a perfect udder. She is a maternal sister to Holden's 7034T herd sire.



**HH Advance 1081Y ET**

*Ref.* **1081Y**  
{DLF,HYF,IEF}

**HH Advance 1081Y ET**

Bull — Jan. 8, 2011 — Reg. 43173115

L1 DOMINO 03571 {CHB}  
**HH ADVANCE 8050U ET** {CHB}  
HH MISS ADVANCE 365N

CL 1 DOMINO 320N {CHB,SOD}  
**HH MISS ADVANCE 6188S**  
HH MISS ADVANCE 4172P ET {DOD}

L1 DOMINO 01384 {CHB}  
L1 DOMINETTE 00532  
HH ADVANCE 0024K {SOD}  
HH MISS ADVANCE 103L  
CL 1 DOMINO 019K {SOD}  
CL 1 DOMINETTE 996J 1ET  
HH ADVANCE 145L {SOD,CHB}  
L1 DOMINETTE 93451 {DOD}

CED	BW	WW	YW	MILK	M&G	REA	MARB	CHBS	ATA GE-EPD
+3.2	+2.7	+52	+80	+38	+64	+16	-04	+22	

1081Y is a super long bodied, thick topped bull with excellent pigment, volume and lots of style. He has outstanding individual performance and is a trait leader for Milk and M&G EPDs. His dam is the top cow in Holden's herd on average WW ratio at 113.7.

1081 had the high selling fall bull last year in our sale that sold to Dudley Brothers, along with a top spring bull that sold to Curtis Younts & Son, Brymer Ranch and Cypress Valley Herefords.

# FLYING S HERD SIRES

## Ref. 1098Y

{DLF,HYF,IEF}

### HH Advance 1098Y

Bull — Jan. 11, 2011 — Reg. 43173131

L1 DOMINO 03571 {CHB}  
**HH ADVANCE 8050U ET** {CHB}  
 HH MISS ADVANCE 365N

HH ADVANCE 7101T {CHB}  
**HH MISS ADVANCE 9065W ET**  
 HH MISS ADVANCE 1028L

L1 DOMINO 01384 {CHB}  
 L1 DOMINETTE 00532  
 HH ADVANCE 0024K {SOD}  
 HH MISS ADVANCE 103L  
 HH ADVANCE 4140P {SOD,CHB}  
 HH MISS ADVANCE 1121L  
 HH ADVANCE 6052F {SOD}  
 HH MISS ADVANCE 731G

CED	BW	WW	YW	MILK	M&G	REA	MARB	CHBS	ATA GE-EPD
+5.0	+2.4	+56	+79	+32	+60	+49	-.03	+27	

1098Y was the high selling bull in Holden's 2012 sale at \$102,000 for 3/4 interest and 1/2 possession. 1098Y is a curve bender deluxe with outstanding calving ease combined with exceptional growth and maternal strength. He is a long bodied, smooth made bull with loads of pigment. He is backed by one of Holden's strongest cow families, and his dam is one of their very best young donor females. She is a super functional cow with a perfect udder and loads of milk. Maternal granddam is the great 1028L donor cow that is one of the top cows they have ever produced. 1098Y is an AHA Trait Leader for Calving Ease, Milk, M&G and REA EPDs.

• Owned with Holden Herefords, MT, and Harrison Land and Cattle, OK



HH Advance 1098Y

## Ref. 2125Z

{DLF,HYF,IEF}

### HH Advance 2125Z

Bull — Jan. 20, 2012 — Reg. 43270931

HH ADVANCE 5104R {SOD,CHB}  
**HH ADVANCE 9144W** {CHB}  
 HH MISS ADVANCE 7142T

HH ADVANCE 7101T {CHB}  
**HH MISS ADVANCE 0036X ET**  
 HH MISS ADVANCE 4016P ET {DOD}

CL 1 DOMINO 206M  
 HH MISS ADVANCE 153L {DOD}  
 L1 DOMINO 03571 {CHB}  
 HH MISS ADVANCE 3171N  
 HH ADVANCE 4140P {SOD,CHB}  
 HH MISS ADVANCE 1121L  
 HH ADVANCE 0094K  
 HH MISS ADVANCE 0023K {DOD}

CED	BW	WW	YW	MILK	M&G	REA	MARB	CHBS	ATA GE-EPD
-0.2	+3.5	+51	+78	+40	+65	+0.06	+0.02	+23	

2125Z is an outstanding bull that really brings it all together. He is goggle eyed and heavily pigmented, long bodied and deep sided with great muscle expression. He is very sound made and has lots of eye appeal. He has a great set of EPDs and had an 80 lb. actual BW. His dam is a perfect uddered young cow with goggle eyes, and his granddam is the 4016P cow that sold for \$37,500 in Holden's 2010 cow sale. His great granddam is the great 0023K cow that was a superior donor for Holden.



HH Advance 2125Z

## Ref. 2214Z

{DLF,HYF,IEF}

### HH Advance 2214Z ET

Bull — Feb. 24, 2012 — Reg. 43271018

CL 1 DOMINO 7128T 1ET  
**HH ADVANCE 0132X** {CHB}  
 HH MISS ADVANCE 6054S

HH ADVANCE 5104R {SOD,CHB}  
**HH MISS ADVANCE 8005U ET**  
 HH MISS ADVANCE 2105M

HH ADVANCE 3113N 1ET {SOD,CHB}  
 CL 1 DOMINETTE 0112K 1ET  
 CL 1 DOMINO 320N {CHB,SOD}  
 HH MISS ADVANCE 4053P  
 CL 1 DOMINO 206M  
 HH MISS ADVANCE 153L {DOD}  
 HH ADVANCE 932J 1ET {SOD,CHB}  
 HH MISS ADVANCE 9072J

CED	BW	WW	YW	MILK	M&G	REA	MARB	CHBS
+1.8	+1.4	+50	+78	+32	+57	+1.15	+1.10	+22

2214Z is an outstanding 0132X ET bull that brings a lot to the table. He has excellent pigment and eye appeal and is very long bodied and smooth made. He is a top calving ease bull. His dam, 8005U, is a top donor cow for Holden with tremendous volume, thickness and eye appeal; she sold for \$22,000 in their 2010 female sale.



HH Advance 2214Z ET

# FLYING S HERD SIRES



HH Advance 3006A

*Ref.* **3006A**  
{DLF,HYF,IEF}

**HH Advance 3006A**

Bull — Dec. 29, 2012 — Reg. 43368334

HH ADVANCE 7026T ET  
**HH ADVANCE 0002X** {CHB}  
HH MISS ADVANCE 8163U

HH ADVANCE 8050U ET {CHB}  
**HH MISS ADVANCE 1142Y**  
HH MISS ADVANCE 9176W ET

H ADVANCE 5161R {CHB}  
HH MISS ADVANCE 2111 M  
HH ADVANCE 5104R {SOD,CHB}  
HH MISS ADVANCE 6032S ET  
L1 DOMINO 03571 {CHB}  
HH MISS ADVANCE 365N  
HH ADVANCE 4055P {CHB}  
HH MISS ADVANCE 1088L {DOD}

CED	BW	WW	YW	MILK	M&G	REA	MARB	CHBS	ATA GE-EPD
+0.4	+0.8	+61	+99	+36	+66	+21	+37	+35	

3006A was the high-selling bull in Holden's 2014 sale at \$80,000 for 1/2 interest and 1/2 possession and is an outstanding bull in every way. Long bodied, thick made, well marked and fancy, he backs it all up with outstanding performance plus ultrasound data and great EPDs. He is backed by one of Holden's best cow families. His progeny have tremendous pigment, growth, length, depth, shape, style and eye appeal.

• Owned with Holden Herefords, MT



HH Advance 4052B ET

*Ref.* **4052B**  
{DLF,HYF,IEF}

**HH Advance 4052B ET**

Bull — Jan. 3, 2014 — Reg. 43472735

CL 1 DOMINO 860U {SOD,CHB}  
**CL 1 DOMINO 297Z**  
CL 1 DOMINETTE 9134W 1ET {DOD}

HH ADVANCE 4055P {CHB}  
**HH MISS ADVANCE 9100W**  
HH MISS ADVANCE 5140R ET {DOD}

CL 1 DOMINO 637S 1ET {CHB}  
CL 1 DOMINETTE 5142R {DOD}  
CL 1 DOMINO 732T {SOD,CHB}  
CL 1 DOMINETTE 475P  
HH ADVANCE 145L {SOD,CHB}  
HH MISS ADVANCE 9065J {DOD}  
CL1 DOMINO 180L {CHB}  
HH MISS ADVANCE 793G {DOD}

CED	BW	WW	YW	MILK	M&G	REA	MARB	CHBS	ATA GE-EPD
+1.6	+3.7	+51	+82	+35	+61	+09	+23	+27	

Outstanding growth, maternal and carcass EPDs in this well marked, good pigmented, extra thick 297Z son out of the Holden 9100W donor cow. 4052B is well marked, square hipped, big topped and really nice fronted. He is complete in his make up and has a pedigree loaded with great females. First calves are pigmented and also have shape, length and style.



HH Advance 4101B

*Ref.* **4101B**  
{DLF,HYF,IEF}

**HH Advance 4101B**

Bull — Jan. 8, 2014 — Reg. 43470146

CL 1 DOMINO 955W {CHB}  
**HH ADVANCE 221 ET**  
HH MISS ADVANCE 5152R

HH ADVANCE 8050U ET {CHB}  
**HH MISS ADVANCE 1056Y ET** {DOD}  
HH MISS ADVANCE 6005S {DOD}

CL 1 DOMINO 637S 1ET {CHB}  
CL 1 DOMINETTE 5152R  
L1 DOMINO 01362  
DBH L1 DOMINETTE 355N  
L1 DOMINO 03571 {CHB}  
HH MISS ADVANCE 365N  
CL 1 DOMINO 320N {CHB,SOD}  
HH MISS ADVANCE 164L

CED	BW	WW	YW	MILK	M&G	REA	MARB	CHBS	ATA GE-EPD
+1.3	+4.5	+60	+98	+32	+62	+12	+05	+26	

Heavy pigmented, super fancy 221 son that is long spined, thick and sound structured. Dam is a perfect uddered, easy doing 8050U daughter with red on her teats.

4101B has great individual performance and is the right kind phenotypically. His first calves display tremendous pigment and length and are very stylish.



# A.I. SIRES REPRESENTED

*Ref.* **9075W**  
{CHB,DLF,HYF,IEF}

**HH Advance 9075W ET**  
Bull — Jan. 11, 2009 — Reg. 42999359

HH ADVANCE 4140P {SOD,CHB}  
**HH ADVANCE 7101T** {CHB}  
HH MISS ADVANCE 1121L

HH ADVANCE 0024K {SOD}  
HH MISS ADVANCE 2111 M  
HH ADVANCE 8060H 1ET  
HH MISS ADVANCE 9078J

HH ADVANCE 6052F {SOD}  
**HH MISS ADVANCE 1028L**  
HH MISS ADVANCE 731G

CL 1 DOMINO 392 {SOD}  
HH MISS ADVANCE 160A {DOD}  
HH ADVANCE 5029E  
HH MS ADVANCE 5018E

CED	BW	WW	YW	MILK	M&G	REA	MARB	CHBS	ATA GE-EPD
+0.5	+4.3	+53	+83	+29	+56	+83	-.10	+27	

Powerful combination of length, muscle, eye appeal and maternal strength combined with loads of pigment. Dam is the great 1028L donor.



**HH Advance 9075W ET**

*Ref.* **221**  
{DLF,HYF,IEF}

**HH Advance 221 ET**  
Bull — Jan. 19, 2012 — Reg. 43295357

CL 1 DOMINO 637S 1ET {CHB}  
**CL 1 DOMINO 955W** {CHB}  
CL 1 DOMINETTE 5152R

L1 DOMINO 03396 {CHB,SOD}  
CL1 DOMINETTE 118L  
CL 1 DOMINO 3162N {CHB}  
CL 1 DOMINETTE 392N

L1 DOMINO 01362  
**HH MISS ADVANCE 5152R**  
DBH L1 DOMINETTE 355N

L1 DOMINO 98324  
L1 DOMINETTE 99455 {DOD}  
DBH L1 DOMINO 361K  
DBH L1 DOMINETTE 306J

CED	BW	WW	YW	MILK	M&G	REA	MARB	CHBS	ATA GE-EPD
+1.0	+4.6	+59	+100	+28	+58	+34	-.08	+24	

Performance, pigment, length of body and eye appeal in a great package.



**HH Advance 221 ET**

**American  
HEREFORD  
ASSOCIATION**

American Hereford Association  
P.O. Box 014059 • Kansas City, MO 64101  
816-842-3757 • Hereford.org  
©2015 American Hereford Association

**HEREFORDS. Accountable.  
Predictable. Profitable. Sustainable.**

\* The Spring 2015 Hereford Pan-American Cattle Evaluation (PACE) documents consistent improvements in all traits of economic importance. From 2004 to 2014, AHA Genetic Trends indicate a 14% reduction in birth weights, 20% improvement in weaning and yearling performance and a 30% improvement in end product merit. Hereford.org/userfiles/S15\_Trend.pdf

# He wants it all.

There's a reason a tried and true black baldie is the most favored cow in America's cow herd. She's accountable, predictable, profitable and sustainable. Her calf and her steer mates are in demand, regardless of end point.

The stakes have never been higher to create **value** and **efficiency** throughout the production system. In the past decade, Hereford has documented dramatic improvements in calving ease, weaning and yearling performance and end product merit.\*

Reduce your risk. Improve your opportunity for profitability.

You want it all  
in your beef operation?  
Then take it.

# FALL 2014 BULLS

Selling four top herd bull prospects from the 221 x 7142T flush!



**FS Advance 4007B ET**

4007B is an HH Advance 221 son and a top herd bull prospect with fantastic depth of rib, muscle, pigment, performance and fleshing ability. He is super long, fancy and well marked with great EPDs and out of the 7142T donor. Three full brothers also sell.

4011B is a dark red herd bull prospect that has it all. He is a performance, maternal and carcass bull that is heavily pigmented, long bodied, deep sided, big topped and very smooth made. He has always caught everyone's eye.



**HH Miss Advance 7142T ET**

Sons sell as Lots 4007B, 4011B, 4012B, 4013B



**FS Advance 4011B ET**

*Lot* **4007B**  
{DLF,HYF,IEF}

**FS Advance 4007B ET**  
Bull — Aug. 17, 2014 — Reg. 43548137

CL 1 DOMINO 955W {CHB}  
**HH ADVANCE 221 ET**  
HH MISS ADVANCE 5152R

L1 DOMINO 03571 {CHB}  
**HH MISS ADVANCE 7142T**  
HH MISS ADVANCE 3171N

CL 1 DOMINO 637S 1ET {CHB}  
CL 1 DOMINETTE 5152R  
L1 DOMINO 01362  
DBH L1 DOMINETTE 355N  
L1 DOMINO 01384 {CHB}  
L1 DOMINETTE 00532  
HH ADVANCE 0024K {SOD}  
HH MISS ADVANCE 1121L

ACT. BW 80  
ADJ. WW 723  
ADJ. YW 1198  
SCROTAL 39  
ADJ. REA 9.94  
REA/CWT. 0.75  
ADJ. IMF 3.38

CED	BW	WW	YW	MILK	M&G	REA	MARB	CHBS
+1.8	+3.4	+49	+79	+32	+56	-.19	+.19	+20

EYE PIGMENTATION LEFT **100%** RIGHT **100%**

**TOP HERD BULL PROSPECT**

- Top 5% of breed on Milk EPD
- Ratioed 114 on marbling
- Sells with 60 units of semen
- Selling 3/4 semen interest and full possession

*Lot* **4011B**  
{DLF,HYF,IEF}

**FS Advance 4011B**  
Bull — Aug. 26, 2014 — Reg. 43548133

CL 1 DOMINO 955W {CHB}  
**HH ADVANCE 221 ET**  
HH MISS ADVANCE 5152R

L1 DOMINO 03571 {CHB}  
**HH MISS ADVANCE 7142T**  
HH MISS ADVANCE 3171N

CL 1 DOMINO 637S 1ET {CHB}  
CL 1 DOMINETTE 5152R  
L1 DOMINO 01362  
DBH L1 DOMINETTE 355N  
L1 DOMINO 01384 {CHB}  
L1 DOMINETTE 00532  
HH ADVANCE 0024K {SOD}  
HH MISS ADVANCE 1121L

ACT. BW 83  
ADJ. WW 714  
ADJ. YW 1122  
SCROTAL 38  
ADJ. REA 11.71  
REA/CWT. 0.93  
ADJ. IMF 2.32

CED	BW	WW	YW	MILK	M&G	REA	MARB	CHBS
+1.8	+3.8	+51	+84	+32	+57	-.02	+.10	+22

EYE PIGMENTATION LEFT **100%** RIGHT **100%**

**TOP HERD BULL PROSPECT**

- Goggle eyed
- Top 5% of breed on Milk EPD
- REA ratio 102
- Sells with 60 units of semen
- Selling 3/4 semen interest and full possession



**FS Advance 4012B ET**

4012B is huge topped, thick made, deep ribbed, extra pigmented and long bodied. Here is a dark red powerhouse herd bull out of the 7142T donor. The dam of these four flush brothers, 7142T, is an outstanding donor cow with tons of power, volume and a great udder combined with a powerful EPD profile and a great phenotype. 7142T is also the dam of the 9144W bull that topped Holden's 2010 sale as well as Holden's HH Advance 1069Y herd sire. These four sons selling have tremendous potential.

4013B is another of the bulls from the 7142T donor x 221 flush. He is extra long, deep sided, big butted and great fronted while exhibiting phenomenal muscle expression.

Full sisters to these four brothers sell as a "Pick of the Flush" lot.



**FS Advance 4013B ET**

*Lot* **4012B**  
{DLF,HYF,IEF}

**FS Advance 4012B**  
Bull — Aug. 27, 2014 — Reg. 43548132

CL 1 DOMINO 955W {CHB}	CL 1 DOMINO 637S 1ET {CHB}	ACT. BW
<b>HH ADVANCE 221 ET</b>	CL 1 DOMINETTE 5152R	88
HH MISS ADVANCE 5152R	L1 DOMINO 01362	ADJ. WW
	DBH L1 DOMINETTE 355N	708
	L1 DOMINO 01384 {CHB}	ADJ. YW
L1 DOMINO 03571 {CHB}	L1 DOMINETTE 00532	1194
<b>HH MISS ADVANCE 7142T</b>	HH ADVANCE 0024K {SOD}	SCROTAL
HH MISS ADVANCE 3171N	HH MISS ADVANCE 1121L	38
		ADJ. REA
		12.12
		REA/CWT.
		0.90
		ADJ. IMF
		2.51

CED	BW	WW	YW	MILK	M&G	REA	MARB	CHBS
+1.8	+3.7	+53	+87	+32	+58	-.03	+.13	+22

**EYE PIGMENTATION** LEFT **100%** RIGHT **100%**

**TOP HERD BULL PROSPECT**

- Ratioed 105 on REA
- Top 5% of breed on Milk EPD
- 100% pigmented
- Sells with 60 units of semen
- Selling 3/4 semen interest and full possession

*Lot* **4013B**  
{DLF,HYF,IEF}

**FS Advance 4013B**  
Bull — Aug. 29, 2014 — Reg. 43548131

CL 1 DOMINO 955W {CHB}	CL 1 DOMINO 637S 1ET {CHB}	ACT. BW
<b>HH ADVANCE 221 ET</b>	CL 1 DOMINETTE 5152R	80
HH MISS ADVANCE 5152R	L1 DOMINO 01362	ADJ. WW
	DBH L1 DOMINETTE 355N	685
	L1 DOMINO 01384 {CHB}	ADJ. YW
L1 DOMINO 03571 {CHB}	L1 DOMINETTE 00532	1109
<b>HH MISS ADVANCE 7142T</b>	HH ADVANCE 0024K {SOD}	SCROTAL
HH MISS ADVANCE 3171N	HH MISS ADVANCE 1121L	36
		ADJ. REA
		10.37
		REA/CWT.
		0.85
		ADJ. IMF
		4.12

CED	BW	WW	YW	MILK	M&G	REA	MARB	CHBS
+1.8	+3.3	+50	+80	+32	+57	-.20	+.26	+22

**EYE PIGMENTATION** LEFT **50%** RIGHT **100%**

- Ratioed 139 on Marbling
- Top 5% of breed on Milk EPD
- Top 8% of breed on Marbling EPD
- Full brothers sell as Lots 4007B, 4011B and 4012B

# FALL 2014 BULLS



**CL 1 Dominette 606S 1ET**  
Dam of Lot 4009B

## Lot 4009B {DLF,HYF,IEF}

### FS Advance 4009B ET

Bull — Aug. 24, 2014 — Reg. 43548136

CL 1 DOMINO 955W {CHB}  
**HH ADVANCE 221 ET**  
HH MISS ADVANCE 5152R

HH ADVANCE 3113N 1ET {SOD,CHB}  
**CL 1 DOMINETTE 606S 1ET**  
CL 1 DOMINETTE 0112K 1ET

CL 1 DOMINO 637S 1ET {CHB}  
CL 1 DOMINETTE 5152R  
L1 DOMINO 01362  
DBH L1 DOMINETTE 355N  
L1 DOMINO 99496 {SOD}  
HH MS ADV 875H 1ET  
CL 1 DOMINO 5131E {SOD}  
CL 1 DOMINETTE 411

ACT. BW 78  
ADJ. WW 653  
ADJ. YW 1113  
SCROTAL 36  
ADJ. REA 13.31  
REA/CWT. 1.05  
ADJ. IMF 2.48

CED	BW	WW	YW	MILK	M&G	REA	MARB	CHBS
+1.4	+4.4	+54	+87	+29	+55	+43	-.02	+24

EYE PIGMENTATION LEFT **90%** RIGHT **90%**

HH Advance 221 son that has a lot to offer. 4009B is deep sided and easy doing with good thickness and pigment. Dam is top donor cow CL 1 Dominette 606S that has done a great job for us.

- Ratioed 116 on REA
- Full sisters sell as "Pick of the Flush" Lots 4005B and 4006B
- Maternal sisters sell as Lots 513C and 428B

## Lot 436B {DLF,HYF,IEF}

### FS Advance 436B

Bull — Oct. 4, 2014 — Reg. 43524613

CL 1 DOMINO 955W {CHB}  
**HH ADVANCE 221 ET**  
HH MISS ADVANCE 5152R

HH ADVANCE 6163S  
**HH MISS ADVANCE 9230W**  
HH MISS ADVANCE 4077P {DOD}

CL 1 DOMINO 637S 1ET {CHB}  
CL 1 DOMINETTE 5152R  
L1 DOMINO 01362  
DBH L1 DOMINETTE 355N  
HH ADVANCE 396N {CHB,SOD}  
HH MISS ADVANCE 2111 M  
HH ADVANCE 145L {SOD,CHB}  
HH MS ADVANCE 0028K 1ET

ACT. BW 87  
ADJ. WW 735  
ADJ. YW 1087  
SCROTAL 36  
ADJ. REA 11.46  
REA/CWT. 0.97  
ADJ. IMF 3.26

CED	BW	WW	YW	MILK	M&G	REA	MARB	CHBS
+0.3	+4.5	+53	+93	+28	+54	+35	-.05	+22

EYE PIGMENTATION LEFT **100%** RIGHT **100%**

Good pigmented HH Advance 221 son out of a great cow family. 436B is a stout made, long bodied bull with extra rib and depth. A power bull that will add pounds to your calf crops, he is a great combination of growth, maternal and carcass strengths.

- Top 12% of breed on YW EPD
- Top 10% of breed on Milk EPD
- Dam is a top producing donor and sells as Lot 9230W

## Lot 438B {DLF,HYF,IEF}

### FS Advance 438B

Bull — Oct. 27, 2014 — Reg. 43546914

CL 1 DOMINO 7128T 1ET  
**HH ADVANCE 1059Y** {CHB}  
HH MISS ADVANCE 7239T

HH ADVANCE 0002X {CHB}  
**FS MISS ADVANCE 261Z**  
-S MISS ADVANCE DOM 1130L T210

HH ADVANCE 3113N 1ET {SOD,CHB}  
CL 1 DOMINETTE 0112K 1ET  
CL 1 DOMINO 320N {CHB,SOD}  
HH MISS ADVANCE 1088L {DOD}  
HH ADVANCE 7026T ET  
HH MISS ADVANCE 8163U  
HH ADVANCE 4140P {SOD,CHB}  
HH MISS ADVANCE 1130L

ACT. BW 65  
ADJ. WW 669  
ADJ. YW 1234  
SCROTAL 36  
ADJ. REA 13.22  
REA/CWT. 1.08  
ADJ. IMF 3.36

CED	BW	WW	YW	MILK	M&G	REA	MARB	CHBS
+2.9	+0.6	+49	+78	+32	+57	+39	+.14	+26

EYE PIGMENTATION LEFT **100%** RIGHT **100%**

#### TOP HEIFER BULL PROSPECT

Extra pigment in this well marked 1059Y son. He is long bodied and smooth shouldered with tremendous neck extension. 438B is a top-notch heifer bull with an actual birth weight of 65 lbs., a CED EPD of 2.9 and a BW EPD of 0.6. He has tons of power behind him to produce some low birth weight calves that will hit the ground growing.

- Ratioed 103 on WW and 105 on REA
- 100% pigmented
- Top 8% of breed on BW EPD and top 5% on Milk EPD



**FS Advance 442B**

## Lot 442B {DLF,HYF,IEF}

### FS Advance 442B

Bull — Oct. 31, 2014 — Reg. 43546918

CL 1 DOMINO 7128T 1ET  
**HH ADVANCE 1059Y** {CHB}  
HH MISS ADVANCE 7239T

HH ADVANCE 5104R {SOD,CHB}  
**FS MISS ADVANCE 1113Y**  
-S MISS ADVANCE DOM 4098P W1

HH ADVANCE 3113N 1ET {SOD,CHB}  
CL 1 DOMINETTE 0112K 1ET  
CL 1 DOMINO 320N {CHB,SOD}  
HH MISS ADVANCE 1088L {DOD}  
CL 1 DOMINO 206M  
HH MISS ADVANCE 153L {DOD}  
BR L1 ADVANCE 6017 ET {CHB}  
HH MISS ADVANCE 4098P

ACT. BW 67  
ADJ. WW 664  
ADJ. YW 1200  
SCROTAL 38  
ADJ. REA 11.28  
REA/CWT. 0.91  
ADJ. IMF 3.52

CED	BW	WW	YW	MILK	M&G	REA	MARB	CHBS
+2.1	+0.5	+49	+80	+30	+55	+24	+.11	+24

EYE PIGMENTATION LEFT **100%** RIGHT **100%**

#### POWERFUL HEIFER BULL PROSPECT

442B is a top heifer bull prospect that is extra long, deep sided, big topped, clean fronted, pigmented and big hipped. Sired by HH Advance 1059Y, he is the right kind of bull you can use on heifers as well as cows with his performance and EPDs. Dam is an excellent uddered cow with tons of power in her pedigree.

- 67 lb. actual BW
- 102 WW ratio and 101 YW ratio
- 100% pigmented

# FALL 2014 BULLS



**FS Advance 445B**

*Lat* **445B**  
{DLF,HYF,IEF}

**FS Advance 445B**

Bull — Nov. 3, 2014 — Reg. 43546921

HH ADVANCE 7034T ET {CHB}  
**HH ADVANCE 0081X ET** {CHB}  
HH MISS ADVANCE 5139R ET

L1 DOMINO 03571 {CHB}  
HH MISS ADVANCE 1088L {DOD}  
CL 1 DOMINO 2136M  
HH MS ADVANCE 8037H

ACT. BW  
82  
ADJ. WW  
591  
ADJ. YW  
1138

HH ADVANCE 9075W ET {CHB}  
**HH MISS ADVANCE 1290Y**  
L1 DOMINETTE 09644

HH ADVANCE 7101T {CHB}  
HH MISS ADVANCE 1028L  
L1 DOMINO 06509  
L1 DOMINETTE 06539

SCROTAL  
38  
ADJ. REA  
12.97

CED	BW	WW	YW	MILK	M&G	REA	MARB	CHBS
+1.9	+3.8	+49	+77	+26	+51	+30	+03	+24

REA/CWT.  
1.11  
ADJ. IMF  
3.61

**EYE PIGMENTATION** LEFT **30%** RIGHT **30%**

Stout made, well balanced, big butted, clean fronted, smooth moving and well marked 0081X son with fantastic maternal and carcass strength. 445B should really sire some great daughters with all the great females in his pedigree.

- Ratioed 103 on REA and 104 on marbling
- Great testicle bull with a 38 scrotal circumference

*Stella Grace*  
*Strode*

Born February 12, 2016

*proud parents*

James & Madison Strode



*Lat* **452B**  
{DLF,HYF,IEF}

**FS Advance 452B**

Bull — Nov. 8, 2014 — Reg. 43546928

HH ADVANCE 7034T ET {CHB}  
**HH ADVANCE 0081X ET** {CHB}  
HH MISS ADVANCE 5139R ET

L1 DOMINO 03571 {CHB}  
HH MISS ADVANCE 1088L {DOD}  
CL 1 DOMINO 2136M  
HH MS ADVANCE 8037H

ACT. BW  
78  
ADJ. WW  
638  
ADJ. YW  
1155

HH ADVANCE 9169W  
**HH MISS ADVANCE 1293Y ET**  
HH MISS ADVANCE 0023K {DOD}

HH ADVANCE 4140P {SOD,CHB}  
HH MISS ADVANCE 4019P {DOD}  
HH ADVANCE 6052F {SOD}  
HH MISS ADVANCE 694F

SCROTAL  
36  
ADJ. REA  
12.29

CED	BW	WW	YW	MILK	M&G	REA	MARB	CHBS
+2.8	+2.5	+50	+72	+28	+53	+18	+03	+20

REA/CWT.  
1.04  
ADJ. IMF  
3.69

**EYE PIGMENTATION** LEFT **80%** RIGHT **80%**

Pigment, extra volume, bone and muscle in this 0081X son. 452B has great eye appeal along with maternal and carcass strengths. His pedigree is stacked full of powerful, proven females...maternal granddam is the great HH Miss Advance 0023K donor.

- Ratioed 106 on marbling
- Top 10% of breed on Milk EPD

*Lat* **453B**  
{DLF,HYF,IEF}

**FS Advance 453B**

Bull — Nov. 9, 2014 — Reg. 43546929

HH ADVANCE 8050U ET {CHB}  
**HH ADVANCE 1098Y** {CHB}  
HH MISS ADVANCE 9065W ET

L1 DOMINO 03571 {CHB}  
HH MISS ADVANCE 365N  
HH ADVANCE 7101T {CHB}  
HH MISS ADVANCE 1028L

ACT. BW  
84  
ADJ. WW  
606  
ADJ. YW  
1205

HH ADVANCE 9144W {CHB}  
**HH MISS ADVANCE 1254Y ET**  
HH MISS ADVANCE 7063T ET

HH ADVANCE 5104R {SOD,CHB}  
HH MISS ADVANCE 7142T  
HH ADVANCE 396N {CHB,SOD}  
HH MISS ADVANCE 0023K {DOD}

SCROTAL  
39  
ADJ. REA  
11.83

CED	BW	WW	YW	MILK	M&G	REA	MARB	CHBS
+2.1	+2.7	+51	+83	+30	+56	+28	+02	+24

REA/CWT.  
0.96  
ADJ. IMF  
3.39

**EYE PIGMENTATION** LEFT **100%** RIGHT **100%**

453B is an HH Advance 1098Y son with depth of rib, muscle expression, pigment and fleshing ability. He is super long and well marked with great EPDs. Dam is a top producing 9144W daughter out of the HH Miss Advance 7063T donor. 453B is a royally bred bull loaded with female power in his pedigree.

- 100% pigmented
- Ratioed 101 on YW
- Top 10% of breed on Milk EPD

# FALL 2014 BULLS



**FS Advance 460B**



**HH Miss Advance 9028W ET**  
Maternal granddam of Lot 460B

*Lot* **460B**  
{DLF,HYF,IEF}

**FS Advance 460B**

Bull — Nov. 14, 2014 — Reg. 43546935

HH ADVANCE 8050U ET {CHB}  
**HH ADVANCE 1081Y ET**  
HH MISS ADVANCE 6188S

HH ADVANCE 0002X {CHB}  
**FS MISS ADVANCE 249Z ET**  
HH MISS ADVANCE 9028W ET

L1 DOMINO 03571 {CHB}  
HH MISS ADVANCE 365N  
CL 1 DOMINO 320N {CHB,SOD}  
HH MISS ADVANCE 4172P ET {DOD}  
HH ADVANCE 7026T ET  
HH MISS ADVANCE 8163U  
HH ADVANCE 7101T {CHB}  
HH MISS ADVANCE 1028L

ACT. BW  
78  
ADJ. WW  
700  
ADJ. YW  
1319  
SCROTAL  
40  
ADJ. REA  
13.33  
REA/CWT.  
1.02  
ADJ. IMF  
3.38

CED	BW	WW	YW	MILK	M&G	REA	MARB	CHBS
+2.7	+2.6	+55	+89	+35	+63	+.31	+.04	+27

EYE PIGMENTATION LEFT **90%** RIGHT **100%**

**TOP HERD BULL PROSPECT**

460B is a fantastic bull that does it all right. He is long bodied, thick made, short marked, clean fronted, big topped and an excellent pigmented HH Advance 1081Y son. 460B backs it all up with tremendous individual performance and ultrasound data.

Dam is a young 0002X daughter that is one of our favorite young cows on the ranch. Maternal granddam, 9028W, is a top donor for us that has produced some of our best females and bulls.

- Ratioed 107 on WW and 110 on YW
- Scanned 106 on REA
- 40 cm. scrotal
- Top 1% of breed on Milk EPD
- Top 2% of breed on M&G EPD

*Free Delivery:*

Free delivery on bull purchases of \$10,000 or more within 500 miles of the ranch. Delivery of bulls will not exceed \$250 per bull. No free delivery on females.

*Lot* **463B**  
{DLF,HYF,IEF}

**FS Advance 463B**

Bull — Nov. 19, 2014 — Reg. 43546938

HH ADVANCE 8050U ET {CHB}  
**HH ADVANCE 1098Y {CHB}**  
HH MISS ADVANCE 9065W ET

HH ADVANCE 0149X {CHB}  
**FS MISS ADVANCE 234Z**  
-S MISS ADVANCE DOM S164 W37

L1 DOMINO 03571 {CHB}  
HH MISS ADVANCE 365N  
HH ADVANCE 7101T {CHB}  
HH MISS ADVANCE 1028L  
HH ADVANCE 8019U ET {CHB}  
HH MISS ADVANCE 7088T ET  
CL 1 DOMINO 528R  
-S MISS ADVANCE DOM 3076 S164

ACT. BW  
88  
ADJ. WW  
633  
ADJ. YW  
1247  
SCROTAL  
36  
ADJ. REA  
13.89  
REA/CWT.  
1.11  
ADJ. IMF  
2.48

CED	BW	WW	YW	MILK	M&G	REA	MARB	CHBS
+2.5	+4.2	+60	+102	+27	+57	+.54	-.01	+29

EYE PIGMENTATION LEFT **100%** RIGHT **100%**

Power, length, depth and thickness along with pigment in this 1098Y son. 463B is one of the top bulls in the sale on WW EPD and YW EPDs and backs it up with fantastic maternal strengths and carcass.

- Ratioed 104 on YW
- Top 6% of breed on YW EPD
- Scanned with a 111% on REA ratio

*Note:*

- ✓ First breeding season guarantee on all bulls
- ✓ All bulls have passed a breeding soundness examination and have tested negative for trichomoniasis

# FALL 2014 BULLS



**FS Advance 464B**



**FS Advance 466B**

*Lat* **464B**  
{DLF,HYF,IEF}

**FS Advance 464B**

Bull — Nov. 19, 2014 — Reg. 43546939

HH ADVANCE 8050U ET {CHB}  
**HH ADVANCE 1098Y** {CHB}  
HH MISS ADVANCE 9065W ET

CL 1 DOMINO 7139T {CHB}  
**CL 1 DOMINETTE 102Y**  
DH DOMINETTE 8141

L1 DOMINO 03571 {CHB}  
HH MISS ADVANCE 365N  
HH ADVANCE 7101T {CHB}  
HH MISS ADVANCE 1028L

CL 1 DOMINO 590R {CHB}  
CL 1 DOMINETTE 530R  
CL 1 DOMINO 638S {SOD}  
DH DOMINETTE 5119

ACT. BW 85  
ADJ. WW 658  
ADJ. YW 1168  
SCROTAL 36  
ADJ. REA 13.36  
REA/CWT. 1.12  
ADJ. IMF 3.45

CED	BW	WW	YW	MILK	M&G	REA	MARB	CHBS
+4.3	+2.6	+55	+73	+25	+53	+19	+07	+24

EYE PIGMENTATION LEFT **90%** RIGHT **80%**

464B is a pigmented, deep sided, big topped, thick quartered bull with extra length of body and eye appeal. He is a strong maternal and calving ease bull.

- Top 10% of breed on CED EPD
- Posted a 101 WW ratio
- Ratioed 107 on REA

*Lat* **466B**  
{DLF,HYF,IEF}

**FS Advance 466B**

Bull — Nov. 22, 2014 — Reg. 43546941

HH ADVANCE 9144W {CHB}  
**HH ADVANCE 2125Z**  
HH MISS ADVANCE 0036X ET

L1 DOMINO 08469 {CHB}  
**HH MISS ADVANCE 1288Y**  
HH MISS ADVANCE 9248W ET

HH ADVANCE 5104R {SOD,CHB}  
HH MISS ADVANCE 7142T  
HH ADVANCE 7101T {CHB}  
HH MISS ADVANCE 4016P ET {DOD}

L1 DOMINO 05516 {CHB}  
L1 DOMINETTE 99374  
HH ADVANCE 5212R {CHB}  
HH MISS ADVANCE 4133P

ACT. BW 86  
ADJ. WW 618  
ADJ. YW 1159  
SCROTAL 38  
ADJ. REA 11.11  
REA/CWT. 0.96  
ADJ. IMF 3.91

CED	BW	WW	YW	MILK	M&G	REA	MARB	CHBS
+1.4	+3.9	+46	+73	+31	+54	-.10	+20	+25

EYE PIGMENTATION LEFT **90%** RIGHT **90%**

Super fronted, easy doing HH Advance 2125Z son that has extra length of body and depth of rib. He is also well marked with tons of style and eye appeal.

- Top 5% of breed on Milk EPD
- Top 12% of breed on Marbling EPD



*Lat* **467B**  
{DLF,HYF,IEF}

**FS Advance 467B**

Bull — Nov. 23, 2014 — Reg. 43546942

HH ADVANCE 9144W {CHB}  
**HH ADVANCE 2125Z**  
HH MISS ADVANCE 0036X ET

L1 DOMINO 08469 {CHB}  
**HH MISS ADVANCE 1240Y**  
HH MISS ADVANCE 9136W

HH ADVANCE 5104R {SOD,CHB}  
HH MISS ADVANCE 7142T  
HH ADVANCE 7101T {CHB}  
HH MISS ADVANCE 4016P ET {DOD}

L1 DOMINO 05516 {CHB}  
L1 DOMINETTE 99374  
HH ADVANCE 4140P {SOD,CHB}  
HH MISS ADVANCE 1028L

ACT. BW 83  
ADJ. WW 577  
ADJ. YW 1078  
SCROTAL 36  
ADJ. REA 10.4  
REA/CWT. 0.96  
ADJ. IMF 3.68

CED	BW	WW	YW	MILK	M&G	REA	MARB	CHBS
+1.7	+2.9	+40	+64	+29	+49	-.08	+18	+21

EYE PIGMENTATION LEFT **90%** RIGHT **100%**

467B is a long bodied, deep ribbed, big topped and pigmented 2125Z son. His pedigree is stacked with powerful dams, and his maternal great-granddam is HH Miss Advance 1028L.

- Top 10% of breed on Milk EPD
- Ratio of 106 on marbling

# FALL 2014 BULLS



**FS Advance 468B**

*Set* **468B**  
{DLF,HYF,IEF}

**FS Advance 468B**

Bull — Nov. 24, 2014 — Reg. 43546943

HH ADVANCE 8050U ET {CHB}  
**HH ADVANCE 1098Y** {CHB}  
HH MISS ADVANCE 9065W ET

B&D L1 DOMINO 8186 ET  
**FS MISS ADVANCE 1121Y**  
MISS ADVANCE 9168W

L1 DOMINO 03571 {CHB}  
HH MISS ADVANCE 365N  
HH ADVANCE 7101T {CHB}  
HH MISS ADVANCE 1028L  
CL 1 DOMINO 623S {CHB}  
CL 1 DOMINETTE 028K {DOD}  
CL 1 DOMINO 750T 1ET  
HH MISS ADVANCE 6109S

ACT. BW 85  
ADJ. WW 689  
ADJ. YW 1266  
SCROTAL 40  
ADJ. REA 14.24  
REA/CWT. 1.11  
ADJ. IMF 3.78

CED	BW	WW	YW	MILK	M&G	REA	MARB	CHBS
+3.1	+3.2	+57	+86	+32	+60	+24	+11	+28

EYE PIGMENTATION LEFT **100%** RIGHT **100%**

**TOP HERD BULL PROSPECT**

468B is one that has caught our eye from the beginning. Phenotypically, he is a thick made, big topped, square hipped, extra red herd bull prospect. He is a powerful, stout 1098Y son that has been a top performance, maternal and carcass bull.

- 100% pigmented
- 106 WW ratio and 106 YW ratio
- Ratioed 114 on REA and 109 on marbling
- Top 4% of breed for Milk and M&G EPDs
- 39 scrotal circumference

*Set* **469B**  
{DLF,HYF,IEF}

**FS Advance 469B (Twin)**

Bull — Nov. 25, 2014 — Reg. 43546944

HH ADVANCE 8050U ET {CHB}  
**HH ADVANCE 1081Y ET**  
HH MISS ADVANCE 6188S

HH ADVANCE 5104R {SOD,CHB}  
**FS MISS ADVANCE 1118Y**  
-S MISS ADVANCE DOM 793G U176

L1 DOMINO 03571 {CHB}  
HH MISS ADVANCE 365N  
CL 1 DOMINO 320N {CHB,SOD}  
HH MISS ADVANCE 4172P ET {DOD}  
CL 1 DOMINO 206M  
HH MISS ADVANCE 153L {DOD}  
CL 1 DOMINO 477P {CHB,SOD}  
HH MISS ADVANCE 793G {DOD}

ACT. BW 65  
ADJ. WW 596  
ADJ. YW 1041  
SCROTAL 40  
ADJ. REA 10.55  
REA/CWT. 1.01  
ADJ. IMF 3.69

CED	BW	WW	YW	MILK	M&G	REA	MARB	CHBS
+1.8	+2.7	+52	+84	+34	+60	+21	+03	+24

EYE PIGMENTATION LEFT **100%** RIGHT **100%**

Short marked, clean fronted, smooth made 1081Y son out of a high maternal HH Advance 5104R daughter. 469B is a deep, big butted bull that has great muscle expression. A maternal bull that is backed by tons of proven cow families.

- 100% pigment
- Top 3% of breed on Milk EPD
- Top 5% of breed on M&G EPD



**FS Advance 473B**

*Set* **473B**  
{DLF,HYF,IEF}

**FS Advance 473B**

Bull — Dec. 4, 2014 — Reg. 43546947

CL 1 DOMINO 7128T 1ET  
**HH ADVANCE 1059Y** {CHB}  
HH MISS ADVANCE 7239T

HH ADVANCE 7034T ET {CHB}  
**HH MISS ADVANCE 0234X**  
HH MISS ADVANCE 4012P ET

HH ADVANCE 3113N 1ET {SOD,CHB}  
CL 1 DOMINETTE 0112K 1ET  
CL 1 DOMINO 320N {CHB,SOD}  
HH MISS ADVANCE 1088L {DOD}  
L1 DOMINO 03571 {CHB}  
HH MISS ADVANCE 1088L {DOD}  
HH ADVANCE 0024K {SOD}  
HH MS ADV 7008G 1ET

ACT. BW 82  
ADJ. WW 602  
ADJ. YW 1094  
SCROTAL 37  
ADJ. REA 11.76  
REA/CWT. 1.07  
ADJ. IMF 3.14

CED	BW	WW	YW	MILK	M&G	REA	MARB	CHBS
+2.7	+1.3	+43	+64	+28	+50	+16	+04	+18

EYE PIGMENTATION LEFT **100%** RIGHT **100%**

**TOP HEIFER BULL PROSPECT**

473B has been one to keep an eye on. He has incredible style and eye appeal shared with tremendous neck extension, depth and thickness. Dam is a great uddered 7034T daughter that has three daughters working in our herd now. Great granddam is the HH Ms Adv 7008G donor cow that has produced lots of outstanding progeny.

- 100% pigmented
- Dam will be a donor this spring
- Top 14% BW EPD





# FALL 2014 BULLS



**FS Advance 474B**

*Lot* **474B**  
{DLF,HYF,IEF}

**FS Advance 474B**

Bull — Dec. 6, 2014 — Reg. 43546948

HH ADVANCE 8050U ET {CHB}  
**HH ADVANCE 1081Y ET**  
HH MISS ADVANCE 6188S

HH ADVANCE 9169W  
**HH MISS ADVANCE 2089Z**  
HH MISS ADVANCE 9024W

L1 DOMINO 03571 {CHB}     **ACT. BW**  
HH MISS ADVANCE 365N     **86**  
CL 1 DOMINO 320N {CHB,SOD}     **ADJ. WW**  
HH MISS ADVANCE 4172P ET {DOD}     **719**  
HH ADVANCE 4140P {SOD,CHB}     **ADJ. YW**  
HH MISS ADVANCE 4019P {DOD}     **1347**  
BR L1 ADVANCE 6017 ET {CHB}     **SCROTAL**  
HH MISS ADVANCE 5150R ET     **38**

CED	BW	WW	YW	MILK	M&G	REA	MARB	CHBS
+1.3	+4.9	+53	+93	+31	+58	+41	-10	+24

*EYE PIGMENTATION*     LEFT **100%**     RIGHT **100%**

Big topped, thick butted, deep ribbed and extra fancy HH Advance 1081Y son. 474B is a top performing powerhouse herd bull prospect. He has tons of natural thickness and eye appeal. His dam is a top performing cow that will be moved into our donor program in the fall.

- Ratioed 101 on WW and 110 on YW
- Top 15% of breed on YW EPD
- 104 on REA ratio



**HH Advance 1059Y**

Sire of Lot 479B

*Lot* **479B**  
{DLF,HYF,IEF}

**FS Advance 479B**

Bull — Dec. 15, 2014 — Reg. 43546952

CL 1 DOMINO 7128T 1ET  
**HH ADVANCE 1059Y** {CHB}  
HH MISS ADVANCE 7239T

HH ADVANCE 6163S  
**HH MISS ADVANCE 9233W**  
HH MISS ADVANCE 7124T

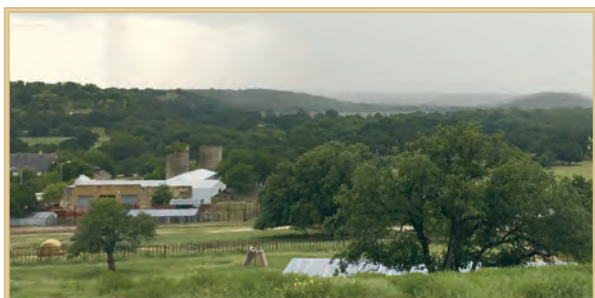
HH ADVANCE 3113N 1ET {SOD,CHB}     **ACT. BW**  
CL 1 DOMINETTE 0112K 1ET     **89**  
CL 1 DOMINO 320N {CHB,SOD}     **ADJ. WW**  
HH MISS ADVANCE 1088L {DOD}     **658**  
HH ADVANCE 396N {CHB,SOD}     **ADJ. YW**  
HH MISS ADVANCE 2111 M     **1218**  
L1 DOMINO 03571 {CHB}     **SCROTAL**  
HH MISS ADVANCE 342N     **39**

CED	BW	WW	YW	MILK	M&G	REA	MARB	CHBS
+1.2	+3.1	+46	+78	+28	+51	+31	+05	+22

*EYE PIGMENTATION*     LEFT **70%**     RIGHT **80%**

Thick, deep, fancy HH Advance 1059Y son that really brings a lot to the table. 479B is a smooth made, fancy fronted, high maternal bull out of a big, stout HH Advance 6163S daughter.

- 39 cm scrotal circumference
- Ratioed 100 on REA and 103 on marbling
- Dam sells as Lot 9233W



*Lot* **480B**  
{DLF,HYF,IEF}

**FS Advance 480B**

Bull — Dec. 18, 2014 — Reg. 43546953

HH ADVANCE 8050U ET {CHB}  
**HH ADVANCE 1098Y** {CHB}  
HH MISS ADVANCE 9065W ET

L1 DOMINO 04570 {SOD}  
**L1 DOMINETTE 07413**  
L1 DOMINETTE 05424

L1 DOMINO 03571 {CHB}     **ACT. BW**  
HH MISS ADVANCE 365N     **85**  
HH ADVANCE 7101T {CHB}     **ADJ. WW**  
HH MISS ADVANCE 1028L     **674**  
L1 DOMINO 02347     **ADJ. YW**  
L1 DOMINETTE 99410 {DOD}     **1194**  
L1 DOMINO 02492     **SCROTAL**  
L1 DOMINETTE 00543     **37**

CED	BW	WW	YW	MILK	M&G	REA	MARB	CHBS
+1.4	+3.1	+48	+75	+23	+47	+28	+13	+24

*EYE PIGMENTATION*     LEFT **20%**     RIGHT **90%**

Well marked, moderate framed, big topped and big butted HH Advance 1098Y son. Lots of cow power and carcass strength.

- Good pigment
- Ratioed 108 on marbling

# FALL 2014 BULLS



**FS Advance 482B**

## Lot 482B {DLF,HYF,IEF}

### FS Advance 482B

Bull — Dec. 20, 2014 — Reg. 43546955

HH ADVANCE 8050U ET {CHB}  
**HH ADVANCE 1081Y ET**  
HH MISS ADVANCE 6188S

HH ADVANCE 4140P {SOD,CHB}  
**-S MISS ADVANCE DOM 1130L T210**  
HH MISS ADVANCE 1130L

L1 DOMINO 03571 {CHB} **ACT. BW 88**  
HH MISS ADVANCE 365N **ADJ. WW 734**  
CL 1 DOMINO 320N {CHB,SOD} **ADJ. YW 1218**  
HH MISS ADVANCE 4172P ET {DOD} **SCROTAL 36**  
HH ADVANCE 0024K {SOD} **ADJ. REA 12.19**  
HH MISS ADVANCE 2111 M **REA/CWT. 1.01**  
CL 1 DOMINO 824H {SOD} **ADJ. IMF 3.38**  
HH MISS ADVANCE 415D {DOD}

CED	BW	WW	YW	MILK	M&G	REA	MARB	CHBS
+0.9	+4.2	+54	+82	+32	+59	+44	-.06	+23

**EYE PIGMENTATION** LEFT **100%** RIGHT **90%**

#### TOP HERD BULL PROSPECT

Here's a bull that will add red pigment and meat to your calf crops. 482B is pigmented and long bodied with a terrific rear quarter on him. He is deep sided, big topped and soggy.

Dam is a top producing cow whose average WW ratio is 104.8 on five head and YW ratio is 103.7 on three. 482B is a high maternal, performance, carcass bull with loads of pigment.

- 100% pigmented
- 103 WW ratio
- Top 4% of breed on Milk EPD
- Top 5% of breed on M&G EPD

## Lot 483B {DLF,HYF,IEF}

### FS Advance 483B

Bull — Dec. 23, 2014 — Reg. 43546956

HH ADVANCE 8050U ET {CHB}  
**HH ADVANCE 1081Y ET**  
HH MISS ADVANCE 6188S

CL 1 DOMINO 320N {CHB,SOD}  
**HH MISS ADVANCE 6195S**  
HH MISS ADVANCE 4098P

L1 DOMINO 03571 {CHB} **ACT. BW 90**  
HH MISS ADVANCE 365N **ADJ. WW 757**  
CL 1 DOMINO 320N {CHB,SOD} **ADJ. YW 1291**  
HH MISS ADVANCE 4172P ET {DOD} **SCROTAL 37**  
CL 1 DOMINO 019K {SOD} **ADJ. REA 11.53**  
CL 1 DOMINETTE 996J 1ET **REA/CWT. 0.91**  
HH ADVANCE 145L {SOD,CHB} **ADJ. IMF 3.32**  
HH MISS ADVANCE 912J

CED	BW	WW	YW	MILK	M&G	REA	MARB	CHBS
+1.2	+4.4	+53	+89	+32	+58	+13	-.03	+25

**EYE PIGMENTATION** LEFT **90%** RIGHT **100%**

483B is a moderate framed, great pigmented, deep ribbed bull with tremendous muscle, volume and fleshing ability. Another top 1081Y son, he is backed by lots of cow power in his pedigree. His maternal granddam is the \$31,000 HH Miss Advance 4098P. Dam is a great uddered and top producing CL 1 Domino 320N daughter.

- 106 on WW ratio and 105 on YW ratio
- Ratioed 100 on marbling
- Top 4% of breed on Milk EPD

## Lot 485B {DLF,HYF,IEF}

### FS Advance 485B

Bull — Dec. 25, 2014 — Reg. 43546958

CL 1 DOMINO 7128T 1ET  
**HH ADVANCE 1059Y** {CHB}  
HH MISS ADVANCE 7239T

HH ADVANCE 5212R {CHB}  
**FS MISS ADVANCE 220Z**  
EL MISS ADVANCE 339N

HH ADVANCE 3113N 1ET {SOD,CHB} **ACT. BW 65**  
CL 1 DOMINETTE 0112K 1ET **ADJ. WW 634**  
CL 1 DOMINO 320N {CHB,SOD} **ADJ. YW 1134**  
HH MISS ADVANCE 1088L {DOD} **SCROTAL 37**  
CL 1 DOMINO 206M **ADJ. REA 11.76**  
HH MISS ADVANCE 1028L **REA/CWT. 1.09**  
HH ADVANCE 872X **ADJ. IMF 3.35**  
HH MISS ADVANCE 2103M

CED	BW	WW	YW	MILK	M&G	REA	MARB	CHBS
+3.5	+0.2	+42	+69	+26	+47	+24	+12	+23

**EYE PIGMENTATION** LEFT **100%** RIGHT **80%**

Another top quality 1059Y son that is a top heifer bull prospect with fantastic carcass and maternal strengths. Dam is a great uddered HH Advance 5212R daughter with great pigment. 485B is the youngest fall bull but hasn't missed a step on performance.

- Ratioed 101 on marbling
- Top 5% of breed Scrotal EPD
- Dam sells as Lot 220Z with her heifer calf



# Spring Bulls



**FS Advance 5008C ET**



**FS Advance 5000C ET**

Two flush brothers from  
the 9075W x 7008G flush!

## Lot 5008C

### FS Advance 5008C ET

Bull — Jan. 29, 2015 — Reg. 43568511

HH ADVANCE 7101T {CHB}  
**HH ADVANCE 9075W ET** {CHB}  
HH MISS ADVANCE 1028L

CL 1 DOMINO 500E {SOD}  
**HH MS ADV 7008G 1ET**  
HH MISS ADVANCE 251B

HH ADVANCE 4140P {SOD,CHB}  
HH MISS ADVANCE 1121L  
HH ADVANCE 6052F {SOD}  
HH MISS ADVANCE 731G  
CL 1 DOMINO 166 {SOD}  
CL 1 DOMINETTE 7013 {DOD}  
HH ADVANCE 9012Y {SOD}  
HH MISS ADVANCE 063Z

ACT. BW  
**96**  
ADJ. WW  
**746**  
ADJ. YW  
**1335**  
SCROTAL  
**39**  
ADJ. REA  
**15.21**  
REA/CWT.  
**1.18**  
ADJ. IMF  
**3.65**

CED	BW	WW	YW	MILK	M&G	REA	MARB	CHBS
+2.6	+3.2	+45	+71	+26	+48	+65	-.13	+22

EYE PIGMENTATION LEFT **100%** RIGHT **100%**

#### TOP HERD BULL PROSPECT

5008C is an outstanding HH Advance 9075W son that does it all right. 100% pigmented, long bodied, thick butted, exceptional muscle expression, big topped and has tons of eye appeal and class.

- 746 lb. adj. 205-day weight and 1335 lb. adj. 365-day weight
- Ratioed 111 on REA and 105 on marbling
- Scanned 15.21 on REA and 3.65 on marbling
- Sire, 9075W, is a full brother to our HH Miss Advance 9028W donor

## Lot 5000C

### FS Advance 5000C ET

Bull — Jan. 19, 2015 — Reg. 43568505

HH ADVANCE 7101T {CHB}  
**HH ADVANCE 9075W ET** {CHB}  
HH MISS ADVANCE 1028L

CL 1 DOMINO 500E {SOD}  
**HH MS ADV 7008G 1ET**  
HH MISS ADVANCE 251B

HH ADVANCE 4140P {SOD,CHB}  
HH MISS ADVANCE 1121L  
HH ADVANCE 6052F {SOD}  
HH MISS ADVANCE 731G  
CL 1 DOMINO 166 {SOD}  
CL 1 DOMINETTE 7013 {DOD}  
HH ADVANCE 9012Y {SOD}  
HH MISS ADVANCE 063Z

ACT. BW  
**81**  
ADJ. WW  
**663**  
ADJ. YW  
**1216**  
SCROTAL  
**42**  
ADJ. REA  
**12.16**  
REA/CWT.  
**1.01**  
ADJ. IMF  
**3.33**

CED	BW	WW	YW	MILK	M&G	REA	MARB	CHBS
+2.6	+3.2	+45	+71	+26	+48	+.41	-.14	+19

EYE PIGMENTATION LEFT **100%** RIGHT **100%**

5000C is a top herd bull prospect that has outstanding volume, thickness and eye appeal plus maternal and carcass strengths. He is a soggy, big topped, huge quartered, smooth moving bull.

- 42 cm scrotal
- 100% pigmented
- Full brother sells as Lot 5008C

# SPRING 2015 BULLS

## Lot 501C {DLF,HYF,IEF}

### FS Advance 501C

Bull — Dec. 29, 2014 — Reg. 43568514

CL 1 DOMINO 7128T 1ET	HH ADVANCE 3113N 1ET {SOD,CHB}	ACT. BW							
<b>HH ADVANCE 1059Y</b> {CHB}	CL 1 DOMINETTE 0112K 1ET	82							
HH MISS ADVANCE 7239T	CL 1 DOMINO 320N {CHB,SOD}	ADJ. WW							
	HH MISS ADVANCE 1088L {DOD}	884							
	HH ADVANCE 5104R {SOD,CHB}	ADJ. YW							
HH ADVANCE 9144W {CHB}	HH ADVANCE 5104R {SOD,CHB}	1291							
<b>FS MISS ADVANCE 248Z</b>	HH MISS ADVANCE 7142T	SCROTAL							
HH MISS ADVANCE 0234X	HH ADVANCE 7034T ET {CHB}	37							
	HH MISS ADVANCE 4012P ET	ADJ. REA							
		13.62							
CED	BW	WW	YW	MILK	M&G	REA	MARB	CHBS	REA/CWT.
+1.7	+3.5	+61	+95	+34	+64	+33	+12	+30	1.12
									ADJ. IMF
									3.16

EYE PIGMENTATION LEFT **80%** RIGHT **90%**

#### TOP HERD BULL PROSPECT

501C has a great combination of pigment, muscle, performance and style. He was one of the top performing spring bulls. Dam is a beautiful uddered 9144W daughter that is one of the top young females in our herd and will be entering our donor program.

- Ratioed 124 on WW and 105 on YW
- 884 lb. adj. 205-day weight
- Top 9% of breed on WW EPD and top 13% on YW EPD
- Top 2% of breed on Milk EPD and top 1% on M&G

## Lot 502C

### FS Advance 502C

Bull — Jan. 2, 2015 — Reg. 43568515

HH ADVANCE 9144W {CHB}	HH ADVANCE 5104R {SOD,CHB}	ACT. BW							
<b>HH ADVANCE 2125Z</b>	HH MISS ADVANCE 7142T	75							
HH MISS ADVANCE 0036X ET	HH ADVANCE 7101T {CHB}	ADJ. WW							
	HH MISS ADVANCE 4016P ET {DOD}	677							
	HH ADVANCE 145L {SOD,CHB}	ADJ. YW							
HH ADVANCE 4055P {CHB}	HH MISS ADVANCE 9065J {DOD}	1197							
<b>FS MISS ADVANCE 1108Y</b>	CL 1 DOMINO 2136M	SCROTAL							
HH MISS ADVANCE 6103S	HH MISS ADVANCE 269K {DOD}	39							
		ADJ. REA							
		11.80							
CED	BW	WW	YW	MILK	M&G	REA	MARB	CHBS	REA/CWT.
+2.4	+2.0	+46	+69	+30	+53	+11	+13	+25	0.99
									ADJ. IMF
									3.31

EYE PIGMENTATION LEFT **100%** RIGHT **90%**

Pigment, muscle and performance in this very stylish made bull. He is a deep sided, long bodied 2125Z son that has a lot to offer.

- 39 cm. scrotal circumference
- 75 lb. actual BW
- Top 6% of breed on Milk EPD
- Ratioed 106 on marbling
- Dam sells as Lot 1108Y



## Lot 508C

### FS Advance 508C

Bull — Jan. 17, 2015 — Reg. 43568521

HH ADVANCE 0132X {CHB}	CL 1 DOMINO 7128T 1ET	ACT. BW							
<b>HH ADVANCE 2214Z ET</b>	HH MISS ADVANCE 6054S	80							
HH MISS ADVANCE 8005U ET	HH ADVANCE 5104R {SOD,CHB}	ADJ. WW							
	HH MISS ADVANCE 2105M	670							
	CL 1 DOMINO 732T {CHB}	ADJ. YW							
CL 1 DOMINO 732T {CHB}	CL 1 DOMINO 590R {CHB}	1175							
<b>CL 1 DOMINETTE 084X</b>	CL 1 DOMINETTE 507R {DOD}	SCROTAL							
CL 1 DOMINETTE 4126P	CL 1 DOMINO 1116L	38							
	CL 1 DOMINETTE 193L	ADJ. REA							
		12.33							
CED	BW	WW	YW	MILK	M&G	REA	MARB	CHBS	REA/CWT.
+3.0	+1.2	+44	+67	+31	+52	+11	+02	+16	1.09
									ADJ. IMF
									3.23

EYE PIGMENTATION LEFT **100%** RIGHT **100%**

508C is a big topped, thick made bull that is out of a beautiful uddered CL 1 Domino 732T daughter. He is a pigmented maternal and carcass bull.

- Top 5% of breed on Milk EPD
- Top 15% of breed on Scrotal EPD
- Ratioed 102 on REA and 103 on marbling

## Lot 511C

### FS Advance 511C

Bull — Jan. 18, 2015 — Reg. 43568524

HH ADVANCE 0002X {CHB}	HH ADVANCE 7026T ET	ACT. BW							
<b>HH ADVANCE 3006A</b>	HH MISS ADVANCE 8163U	74							
HH MISS ADVANCE 1142Y	HH ADVANCE 8050U ET {CHB}	ADJ. WW							
	HH MISS ADVANCE 9176W ET	776							
	CL 1 DOMINO 7128T 1ET	ADJ. YW							
HH ADVANCE 1059Y {CHB}	HH MISS ADVANCE 7239T	1300							
<b>FS MISS ADVANCE 327A</b>	HH ADVANCE 0024K {SOD}	SCROTAL							
HH MISS ADVANCE 4103P	HH MISS ADVANCE 266M	38							
		ADJ. REA							
		11.24							
CED	BW	WW	YW	MILK	M&G	REA	MARB	CHBS	REA/CWT.
+2.0	+2.0	+62	+101	+31	+62	+33	+06	+30	1.05
									ADJ. IMF
									2.77

EYE PIGMENTATION LEFT **100%** RIGHT **100%**

#### TOP HERD BULL PROSPECT

Extra pigmented, dark red, powerful herd bull prospect. 511C is a fancy, long bodied, deep ribbed, thick made 3006A son that has lots of cow power and individual performance to rank him in the top of the breed in many traits. Dam is a beautiful uddered 1059Y daughter out of a proven 0024K daughter.

- 74 lb. actual BW
- Ratioed 107 on WW with an adj. 205-day weight of 776 lbs.
- Ratioed 104 on YW with an adj. 365-day weight of 1300 lbs.
- Top 5% of breed on WW EPD and Milk EPD
- Top 6% of breed on YW EPD
- Top 10% of breed on CHB EPD

#### HH Miss Advance 4103P

Maternal granddam of Lot 511C

# SPRING 2015 BULLS

## Lat 512C

### FS Advance 512C

Bull — Jan. 19, 2015 — Reg. 43568525

HH ADVANCE 0002X {CHB}  
**HH ADVANCE 3006A**  
 HH MISS ADVANCE 1142Y

HH ADVANCE 1081Y ET  
**FS MISS ADVANCE 335A**  
 CL 1 DOMINETTE 1109Y

HH ADVANCE 7026T ET  
 HH MISS ADVANCE 8163U  
 HH ADVANCE 8050U ET {CHB}  
 HH MISS ADVANCE 9176W ET  
 HH ADVANCE 8050U ET {CHB}  
 HH MISS ADVANCE 6188S  
 CL 1 DOMINO 8165U 1ET {CHB}  
 CL 1 DOMINETTE 9146W 1ET  
 ACT. BW 75  
 ADJ. WW 779  
 ADJ. YW 1336  
 SCROTAL 41  
 ADJ. REA 13.16  
 REA/CWT. 1.11  
 ADJ. IMF 3.18

CED	BW	WW	YW	MILK	M&G	REA	MARB	CHBS
+2.7	+2.0	+59	+95	+34	+64	+23	+22	+31

EYE PIGMENTATION LEFT **100%** RIGHT **100%**

#### TOP HERD BULL PROSPECT

512C has been a standout bull since he was born. He is a top-notch 100% pigmented herd bull prospect sired by our 3006A herd sire, who is becoming one of the best Line One bulls in many years.

512C combines so many of the traits that the Hereford breed needs today. He has a set of outstanding EPDs, individual performance and ultrasound data. 512C is a deep sided, extra long, thick butted, big topped, easy moving bull. Maternal, growth, carcass and eye appeal are all in this young herd bull prospect.

- 41 cm. scrotal
- 75 lb. actual BW
- Ratioed 107 on WW with an adj. 205-day weight of 779 lbs.
- Ratioed 107 on YW with an adj. 365-day weight of 1336 lbs.
- 108 ratio on REA
- 102 ratio on marbling
- Top 1% of breed on M&G EPD
- Top 2% of breed on Scrotal EPD
- Top 10% of breed on WW EPD

*Think Line One.*

*Think Flying S Herefords.*

## Lat 5009C

### FS Advance 5009C ET

Bull — Jan. 30, 2015 — Reg. 43655805

L1 DOMINO 03571 {CHB}  
**HH ADVANCE 8019U ET** {CHB}  
 HH MISS ADVANCE 4098P

CL 1 DOMINO 2136M  
**HH MISS ADVANCE 6103S**  
 HH MISS ADVANCE 269K {DOD}

L1 DOMINO 01384 {CHB}  
 L1 DOMINETTE 00532  
 HH ADVANCE 145L {SOD,CHB}  
 HH MISS ADVANCE 912J  
 CL 1 DOMINO 9126J 1ET {SOD,CHB}  
 CL 1 DOMINETTE 8124H 2ET  
 HH ADVANCE 0024K {SOD}  
 HH MISS ADVANCE 0064K  
 ACT. BW 82  
 ADJ. WW 742  
 ADJ. YW 1280  
 SCROTAL 37  
 ADJ. REA 12.82  
 REA/CWT. 1.04  
 ADJ. IMF 3.52

CED	BW	WW	YW	MILK	M&G	REA	MARB	CHBS
+2.7	+0.9	+49	+78	+27	+51	+07	+09	+19

EYE PIGMENTATION LEFT **100%** RIGHT **100%**

Big, stout, deep made, fancy fronted 8019U son that brings it all together. 5009C has been one to keep an eye on while on test due to his gains and performance.

- 100% pigmented
- 742 lb. adj. 205-day weight
- Dam was a top female producer
- Top 10% of breed on BW EPD

## Lat 517C

### FS Advance 517C

Bull — Mar. 8, 2015 — Reg. 43568530

CL 1 DOMINO 860U {CHB}  
**CL 1 DOMINO 269Z 1ET**  
 CL 1 DOMINETTE 759T 1ET

HH ADVANCE 0002X {CHB}  
**HH MISS ADVANCE 3073A ET**  
 HH MISS ADVANCE 9176W ET

CL 1 DOMINO 637S 1ET {CHB}  
 CL 1 DOMINETTE 5142R {DOD}  
 CL 1 DOMINO 590R {CHB}  
 CL1 DOMINETTE 193L  
 HH ADVANCE 7026T ET  
 HH MISS ADVANCE 8163U  
 HH ADVANCE 4055P {CHB}  
 HH MISS ADVANCE 1088L {DOD}  
 ACT. BW 82  
 ADJ. WW 700  
 ADJ. YW 1325  
 SCROTAL 37  
 ADJ. REA 10.79  
 REA/CWT. 0.94  
 ADJ. IMF 2.88

CED	BW	WW	YW	MILK	M&G	REA	MARB	CHBS
+3.8	+1.5	+54	+92	+29	+56	+02	+09	+24

EYE PIGMENTATION LEFT **100%** RIGHT **100%**

517C is a well marked, smooth made CL 1 Domino 269Z son that is thick, long bodied and super stylish. He is a pigmented, correct made bull with tons of potential. This March yearling is a top bull that has exceptional volume, eye appeal, maternal strength and carcass.

- 100% pigmented
- 1325 lb. adj. 365-day weight
- Maternal granddam sold for \$19,000 in Holden's 2013 Female Sale



VIEW THE VIDEOS ONLINE PRIOR TO SALE DAY!

# BUYER'S CHOICE DONOR FLUSH



HH Miss Advance 7142T

Choice

# Donor Flush

Here's a great opportunity to choose your donor to flush to the bull of your choice and tie into some of our most elite genetics. We are offering the right to flush the buyer's choice of one of these four outstanding donors.



HH Miss Advance 9028W ET

*Lot* **7142T**  
{DLF,HYF,IEF}

**HH Miss Advance 7142T**  
Cow — Jan. 18, 2007 — Reg. 42785373

- |                              |                        |
|------------------------------|------------------------|
| L1 DOMINO 01384 {CHB}        | L1 DOMINO 98300 {SOD}  |
| <b>L1 DOMINO 03571</b> {CHB} | L1 DOMINETTE 99374     |
| L1 DOMINETTE 00532           | L1 DOMINO 98324        |
|                              | L1 DOMINETTE 94399     |
| HH ADVANCE 0024K {SOD}       | CL 1 DOMINO 824H {SOD} |
| <b>HH MISS ADVANCE 3171N</b> | HH MISS ADVANCE 894H   |
| HH MISS ADVANCE 1121L        | HH ADVANCE 8060H 1ET   |
|                              | HH MISS ADVANCE 9078J  |

CED	BW	WW	YW	MILK	M&G	REA	MARB	CHBS
+2.6	+2.7	+43	+67	+35	+56	-48	+4.0	+20

Outstanding donor cow with tons of power and volume and a great udder combined with a powerful EPD profile and a great phenotype. 7142T is the dam of the HH Advance 9144W bull that topped Holden's 2010 sale and also the dam of Holden's HH Advance 1069Y ET herd sire. She has several outstanding daughters in our herd along with Holden's herd that are incredible producers.

- Sons sell as Lots 4007B, 4011B, 4012B and 4013B
- Daughters sell as "Pick of the Flush" Lots 4004B, 4008B and 4010B

*Lot* **9028W**  
{DLF,HYF,IEF}

**HH Miss Advance 9028W ET**  
Cow — Jan. 4, 2009 — Reg. 42999315

- |                               |                            |
|-------------------------------|----------------------------|
| HH ADVANCE 4140P {SOD,CHB}    | HH ADVANCE 0024K {SOD}     |
| <b>HH ADVANCE 7101T</b> {CHB} | HH MISS ADVANCE 2111 M     |
| HH MISS ADVANCE 1121L         | HH ADVANCE 8060H 1ET       |
|                               | HH MISS ADVANCE 9078J      |
| HH ADVANCE 6052F {SOD}        | CL 1 DOMINO 392 {SOD}      |
| <b>HH MISS ADVANCE 1028L</b>  | HH MISS ADVANCE 160A {DOD} |
| HH MISS ADVANCE 731G          | HH ADVANCE 5029E           |
|                               | HH MS ADVANCE 5018E        |

CED	BW	WW	YW	MILK	M&G	REA	MARB	CHBS
+2.3	+2.7	+49	+76	+29	+53	+5.0	+0.9	+25

9028W is heavily pigmented with a perfect udder, lots of milk and tons of fleshing ability. She is a daughter of the great Holden HH Miss Advance 1028L donor and is further proof of what a strong female line this is proving to be. 9028W is one of four full sisters to Holden's 9075W herd sire. Her full sister produced the HH Advance 1098Y herd sire that was the high selling bull at Holden's 2012 production sale for \$102,000. Two sons sold in last year's sale and averaged \$10,250.



**HH Miss Advance 0167X ET**



**TERMS OF DONOR FLUSH:**

- Selling the right to flush the buyer's choice of 7142T, 9028W, 0167X or 203Z with a guarantee of six (6) transferable embryos and one pregnancy if put in by a certified embryologist.
- In the case that more than six embryos are produced, the buyer will receive all the embryos.
- In the case that less than six transferable embryos are produced, the price will be prorated per embryo and that portion refunded back to the buyer.
- The flush will be by IVF and performed by Hoofstock Genetics, LLC.
- All costs associated with the flush will be the responsibility of the buyer. These donors are available to flush to the bull of your choice right after the sale once payment is received.



**CL 1 Dominette 203Z**

*Lot* **0167X** **HH Miss Advance 0167X ET**  
Cow — Jan. 24, 2010 — Reg. 43073840

HH ADVANCE 396N {CHB,SOD}  
**HH ADVANCE 5161R** {CHB}  
HH MISS ADVANCE 2118M

HH ADVANCE 0024K {SOD}  
**HH MISS ADVANCE 365N**  
HH MISS ADVANCE 103L

CL 1 DOMINO 824H {SOD}  
HH MS ADVANCE 8037H  
HH ADVANCE 932J 1ET {SOD,CHB}  
HH MISS ADVANCE 9028J

CL 1 DOMINO 824H {SOD}  
HH MISS ADVANCE 894H  
HH ADVANCE 6052F {SOD}  
HH MISS ADVANCE 687F

CED	BW	WW	YW	MILK	M&G	REA	MARB	CHBS
-0.7	+3.4	+44	+73	+29	+51	+4.7	-22	+19

0167X is a big ribbed, fancy fronted, beautiful uddered female with tremendous neck extension. She is a power cow deluxe that backs it up with loads of eye appeal and a great, proven cow family. She is a maternal sister to HH Advance 8050U and HH Miss Advance 6155S, who sold for \$95,000 in Holden's 2013 production sale to Iron Lake Ranch in Texas. Her sire, HH Advance 5161R, is also the sire of HH Advance 8203U, who has 858 registered progeny and is also the sire of the HH Advance 7026T herd bull.

*Lot* **203Z** **CL 1 Dominette 203Z**  
Cow — Jan. 4, 2012 — Reg. 43267997

HH ADVANCE 767G 1ET {SOD,CHB}  
**GB L1 DOMINO 175E** {CHB,SOD}  
GB L1 DOM PRCS 3134 {DOD}

CL 1 DOMINO 7139T {CHB}  
**CL 1 DOMINETTE 011X**  
CL 1 DOMINETTE 845U 1ET

CL 1 DOMINO 500E {SOD}  
HH MISS ADVANCE 251B  
GB L1 DOMINO 159 {CHB}  
GB L1 DOM PRCS 105  
CL 1 DOMINO 590R {CHB}  
CL 1 DOMINETTE 530R  
CL 1 DOMINO 477P {CHB,SOD}  
CL 1 DOMINETTE 475P

CED	BW	WW	YW	MILK	M&G	REA	MARB	CHBS
+4.5	+1.7	+53	+87	+29	+55	-.09	+1.7	+25

Big topped, deep ribbed, good uddered and pigmented GB L1 Domino 175E daughter. 203Z is a powerhouse dam that has a lot to bring to the table. She has curve-bending numbers and a great phenotype plus the cow family to back it up. Her daughter FS Miss Advance 402B sold in our sale last year to W4 Ranch for \$8,000.

# PICK OF THE FLUSH

HH Advance 221 ET X HH Miss Advance 7142T



**FS Miss Advance 4004B ET**

*Lot* **4004B**  
{DLF,HYF,IEF}

**FS Miss Advance 4004B ET**  
Cow — Aug. 13, 2014 — Reg. 43548140

CL 1 DOMINO 955W {CHB}	CL 1 DOMINO 637S 1ET {CHB}	ACT. BW							
<b>HH ADVANCE 221 ET</b>	CL 1 DOMINETTE 5152R	68							
HH MISS ADVANCE 5152R	L1 DOMINO 01362	ADJ. WW							
	DBH L1 DOMINETTE 355N	642							
		ADJ. YW							
L1 DOMINO 03571 {CHB}	L1 DOMINO 01384 {CHB}	919							
<b>HH MISS ADVANCE 7142T</b>	L1 DOMINETTE 00532	ADJ. REA							
HH MISS ADVANCE 3171N	HH ADVANCE 0024K {SOD}	10.31							
	HH MISS ADVANCE 1121L	REA/CWT.							
		1.03							
CED	BW	WW	YW	MILK	M&G	REA	MARB	CHBS	ADJ. IMF
+1.8	+3.7	+53	+84	+29	+55	+25	+0.08	+23	4.83

EYE PIGMENTATION LEFT **90%** RIGHT **100%**

• P.E. Dec. 12, 2015 to Mar. 17, 2016 to HH Advance 3006A



**FS Miss Advance 4008B ET**

*Lot* **4008B**  
{DLF,HYF,IEF}

**FS Miss Advance 4008B ET**  
Cow — Aug. 23, 2014 — Reg. 43548135

CL 1 DOMINO 955W {CHB}	CL 1 DOMINO 637S 1ET {CHB}	ACT. BW							
<b>HH ADVANCE 221 ET</b>	CL 1 DOMINETTE 5152R	82							
HH MISS ADVANCE 5152R	L1 DOMINO 01362	ADJ. WW							
	DBH L1 DOMINETTE 355N	680							
		ADJ. YW							
L1 DOMINO 03571 {CHB}	L1 DOMINO 01384 {CHB}	999							
<b>HH MISS ADVANCE 7142T</b>	L1 DOMINETTE 00532	ADJ. REA							
HH MISS ADVANCE 3171N	HH ADVANCE 0024K {SOD}	9.84							
	HH MISS ADVANCE 1121L	REA/CWT.							
		0.92							
CED	BW	WW	YW	MILK	M&G	REA	MARB	CHBS	ADJ. IMF
+1.8	+3.4	+53	+86	+29	+55	+1.18	+0.04	+21	4.06

EYE PIGMENTATION LEFT **90%** RIGHT **100%**

• P.E. Dec. 12, 2015 to Mar. 17, 2016 to HH Advance 3006A

## Pick of the Flush #1

Here's your chance to select one of three outstanding fall 2014 bred heifers from the HH Miss Advance 7142T x HH Advance 221 flush. These heifers are backed by tons of cow power and performance. 7142T is a top notch, proven donor cow out of a very maternal cow family with depth of rib, volume, pigment and an excellent udder. She is a herd bull producer. 7142T is the dam of the high selling bull in Holden's 2010 production sale...HH Advance 9144W sold for \$37,500, and also the dam of HH Advance 1069Y. A daughter, HH Miss Advance 1005Y, sold for \$17,500 in Holden's 2015 female sale.

HH Advance 221 is a powerhouse sire that has performance, pigment, length of body and eye appeal.

These heifers are all deep ribbed, long bodied and pigmented and are very smooth made.

• Full brothers sell as Lots 4007B, 4011B, 4012B and 4013B

*Lot* **4010B**  
{DLF,HYF,IEF}

**FS Miss Advance 4010B ET**  
Cow — Aug. 25, 2014 — Reg. 43548134

CL 1 DOMINO 955W {CHB}	CL 1 DOMINO 637S 1ET {CHB}	ACT. BW							
<b>HH ADVANCE 221 ET</b>	CL 1 DOMINETTE 5152R	82							
HH MISS ADVANCE 5152R	L1 DOMINO 01362	ADJ. WW							
	DBH L1 DOMINETTE 355N	650							
		ADJ. YW							
L1 DOMINO 03571 {CHB}	L1 DOMINO 01384 {CHB}	854							
<b>HH MISS ADVANCE 7142T</b>	L1 DOMINETTE 00532	ADJ. REA							
HH MISS ADVANCE 3171N	HH ADVANCE 0024K {SOD}	7.86							
	HH MISS ADVANCE 1121L	REA/CWT.							
		0.89							
CED	BW	WW	YW	MILK	M&G	REA	MARB	CHBS	ADJ. IMF
+1.8	+3.7	+47	+77	+32	+55	-.15	+0.09	+19	3.82

EYE PIGMENTATION LEFT **100%** RIGHT **100%**

• P.E. Dec. 12, 2015 to Mar. 17, 2016 to HH Advance 3006A



# PICK OF THE FLUSH

HH Advance 221 ET X CL 1 Dominette 606S 1ET



**FS Miss Advance 4005B ET**

*Lot* **4005B**  
{DLF,HYF,IEF}

**FS Miss Advance 4005B ET**

Cow — Aug. 13, 2014 — Reg. 43548138

CL 1 DOMINO 955W {CHB}	CL 1 DOMINO 637S 1ET {CHB}	ACT. BW							
<b>HH ADVANCE 221 ET</b>	CL 1 DOMINETTE 5152R	65							
HH MISS ADVANCE 5152R	L1 DOMINO 01362	ADJ. WW							
	DBH L1 DOMINETTE 355N	614							
		ADJ. YW							
HH ADVANCE 3113N 1ET {SOD,CHB}	L1 DOMINO 99496 {SOD}	888							
<b>CL 1 DOMINETTE 606S 1ET</b>	HH MS ADV 875H 1ET	ADJ. REA							
CL 1 DOMINETTE 0112K 1ET	CL 1 DOMINO 5131E {SOD}	10.42							
	CL 1 DOMINETTE 411	REA/CWT.							
		1.07							
CED	BW	WW	YW	MILK	M&G	REA	MARB	CHBS	ADJ. IMF
+1.4	+4.4	+50	+82	+29	+54	+37	-.01	+24	4.44

EYE PIGMENTATION LEFT **100%** RIGHT **30%**

• P.E. Dec. 12, 2015 to Mar. 17, 2016 to HH Advance 3006A



**FS Miss Advance 4006B ET**

*Lot* **4006B**  
{DLF,HYF,IEF}

**FS Miss Advance 4006B ET**

Cow — Aug. 15, 2014 — Reg. 43548141

CL 1 DOMINO 955W {CHB}	CL 1 DOMINO 637S 1ET {CHB}	ACT. BW							
<b>HH ADVANCE 221 ET</b>	CL 1 DOMINETTE 5152R	65							
HH MISS ADVANCE 5152R	L1 DOMINO 01362	ADJ. WW							
	DBH L1 DOMINETTE 355N	631							
		ADJ. YW							
HH ADVANCE 3113N 1ET {SOD,CHB}	L1 DOMINO 99496 {SOD}	890							
<b>CL 1 DOMINETTE 606S 1ET</b>	HH MS ADV 875H 1ET	ADJ. REA							
CL 1 DOMINETTE 0112K 1ET	CL 1 DOMINO 5131E {SOD}	11.59							
	CL 1 DOMINETTE 411	REA/CWT.							
		1.18							
CED	BW	WW	YW	MILK	M&G	REA	MARB	CHBS	ADJ. IMF
+1.4	+4.1	+54	+87	+32	+59	+08	+17	+25	4.84

EYE PIGMENTATION LEFT **100%** RIGHT **100%**

• P.E. Dec. 12, 2015 to Mar. 17, 2016 to HH Advance 3006A

## Pick of the Flush #2

Here is an opportunity to pick between two big, stout, powerful fall bred heifers out of the CL 1 Dominette 606S x HH Advance 221 flush. Both heifers are deep ribbed, thick built, well marked and really classy. They are powerful, maternally strong, pigmented and well built heifers that have lots of eye appeal. The 606S donor dam has been a high producing donor cow for us along with Cooper Herefords.

- Full brother sells as Lot 4009B
- Maternal sister sells as Lot 513C



**CL 1 Dominette 606S 1ET**

Dam of "Pick of the Flush" Lots 4005B & 4006B

VIEW THE VIDEOS ONLINE PRIOR TO SALE DAY!

# SPRING OPEN HEIFERS

## Open Heifers

### Lot 505C

### FS Miss Advance 505C

Cow — Jan. 12, 2015 — Reg. 43568518

HH ADVANCE 7101T {CHB}  
**FS ADVANCE 309A ET**  
 HH MISS ADVANCE 9168W

HH ADVANCE 1081Y ET  
**FS MISS ADVANCE 321A**  
 HH MISS ADVANCE 6103S

HH ADVANCE 4140P {SOD,CHB}  
 HH MISS ADVANCE 1121L  
 CL 1 DOMINO 750T 1ET  
 HH MISS ADVANCE 6109S  
 HH ADVANCE 8050U ET {CHB}  
 HH MISS ADVANCE 6188S  
 CL 1 DOMINO 2136M  
 HH MISS ADVANCE 269K {DOD}

ACT. BW 65  
 ADJ. WW 578  
 ADJ. YW 821  
 ADJ. REA 9.05  
 REA/CWT. 1.17  
 ADJ. IMF 4.07

CED	BW	WW	YW	MILK	M&G	REA	MARB	CHBS
+3.6	+1.2	+44	+64	+31	+53	+.28	-.03	+19

EYE PIGMENTATION LEFT 100% RIGHT 100%

Dark red, thick built FS Advance 309A daughter. 505C has a lot of growth and maternal strength along with extra pigment. She is fancy fronted and has the look of making a great brood cow.

- Sells open



FS Miss Advance 500C



FS Miss Advance 509C

### Lot 500C

{DLF,HYF,IEF}

### FS Miss Advance 500C

Cow — Dec. 29, 2014 — Reg. 43568512

CL 1 DOMINO 7128T 1ET  
**HH ADVANCE 1059Y** {CHB}  
 HH MISS ADVANCE 7239T

HH ADVANCE 6133S  
**HH MISS ADVANCE 8280U ET**  
 HH MISS ADVANCE 6094S

HH ADVANCE 3113N 1ET {SOD,CHB} ACT. BW 70  
 CL 1 DOMINETTE 0112K 1ET ADJ. WW 625  
 CL 1 DOMINO 320N {CHB,SOD} ADJ. YW 863  
 HH MISS ADVANCE 1088L {DOD} ADJ. REA 10.28  
 L1 DOMINO 01362 REA/CWT. 1.20  
 HH MISS ADVANCE 4042P {DOD} ADJ. IMF 3.92  
 HH ADVANCE 4140P {SOD,CHB}  
 HH MISS ADVANCE 4019P {DOD}

CED	BW	WW	YW	MILK	M&G	REA	MARB	CHBS
+1.9	+2.4	+46	+73	+30	+53	+.30	+.03	+22

EYE PIGMENTATION LEFT 100% RIGHT 100%

500C is an extra fancy, well made heifer that is very easy moving and stout. Dam is the HH Miss Advance 8280U donor that has produced many top daughters and bulls for us.

- Sells open

### Lot 509C

### FS Miss Advance 509C

Cow — Jan. 17, 2015 — Reg. 43568522

HH ADVANCE 7101T {CHB}  
**FS ADVANCE 309A ET**  
 HH MISS ADVANCE 9168W

HH ADVANCE 1081Y ET  
**FS MISS ADVANCE 328A**  
 CL 1 DOMINETTE 084X

HH ADVANCE 4140P {SOD,CHB}  
 HH MISS ADVANCE 1121L  
 CL 1 DOMINO 750T 1ET  
 HH MISS ADVANCE 6109S  
 HH ADVANCE 8050U ET {CHB}  
 HH MISS ADVANCE 6188S  
 CL 1 DOMINO 732T {CHB}  
 CL 1 DOMINETTE 4126P

ACT. BW 72  
 ADJ. WW 654  
 ADJ. YW 975  
 ADJ. REA 9.93  
 REA/CWT. 1.08  
 ADJ. IMF 3.86

CED	BW	WW	YW	MILK	M&G	REA	MARB	CHBS
+2.6	+3.0	+49	+83	+33	+58	+.38	-.13	+21

EYE PIGMENTATION LEFT 100% RIGHT 100%

Moderate framed, easy fleshing heifer with loads of volume and maternal power. Good pigment and style in this 309A daughter.

- Ratioed 102 for WW and 105 for YW
- Sells open

# SPRING OPEN HEIFERS

## Lot 5001C

### FS Miss Advance 5001C ET

Cow — Jan. 19, 2015 — Reg. 43655804

L1 DOMINO 03571 {CHB}  
**HH ADVANCE 8019U ET** {CHB}  
 HH MISS ADVANCE 4098P

CL 1 DOMINO 2136M  
**HH MISS ADVANCE 6103S**  
 HH MISS ADVANCE 269K {DOD}

L1 DOMINO 01384 {CHB}  
 L1 DOMINETTE 00532  
 HH ADVANCE 145L {SOD,CHB}  
 HH MISS ADVANCE 912J  
 CL 1 DOMINO 9126J 1ET {SOD,CHB}  
 CL 1 DOMINETTE 8124H 2ET  
 HH ADVANCE 0024K {SOD}  
 HH MISS ADVANCE 0064K

ACT. BW  
76  
 ADJ. WW  
640  
 ADJ. YW  
925  
 ADJ. REA  
8.46  
 REA/CWT.  
0.90  
 ADJ. IMF  
4.64

CED	BW	WW	YW	MILK	M&G	REA	MARB	CHBS	
+2.7	+0.9	+49	+78	+27	+51	+0.7	+0.09	+19	4.64

EYE PIGMENTATION LEFT **100%** RIGHT **100%**

Fancy, long bodied, pigmented HH Advance 8019U daughter out of our HH Miss Advance 6103S donor.

- Sells open



FS Miss Advance 515C

## Lot 515C

### FS Miss Advance 515C

Cow — Feb. 4, 2015 — Reg. 43568528

HH ADVANCE 9144W {CHB}  
**HH ADVANCE 2125Z**  
 HH MISS ADVANCE 0036X ET

L1 DOMINO 03571 {CHB}  
**HH MISS ADVANCE 8063U ET**  
 HH MISS ADVANCE 4098P

HH ADVANCE 5104R {SOD,CHB}  
 HH MISS ADVANCE 7142T  
 HH ADVANCE 7101T {CHB}  
 HH MISS ADVANCE 4016P ET {DOD}  
 L1 DOMINO 01384 {CHB}  
 L1 DOMINETTE 00532  
 HH ADVANCE 145L {SOD,CHB}  
 HH MISS ADVANCE 912J

ACT. BW  
72  
 ADJ. WW  
583  
 ADJ. YW  
843  
 ADJ. REA  
8.40  
 REA/CWT.  
0.95  
 ADJ. IMF  
4.08

CED	BW	WW	YW	MILK	M&G	REA	MARB	CHBS	
+0.8	+2.6	+49	+79	+31	+56	-.10	+0.11	+20	4.08

EYE PIGMENTATION LEFT **100%** RIGHT **100%**

515C is a long bodied, extra pigmented 2125Z daughter that is smooth made. Her dam was a top producing donor and a full sister to the HH Advance 8019U herd sire.

- Sells open



FS Miss Advance 513C

## Lot 513C

### FS Miss Advance 513C

Cow — Jan. 22, 2015 — Reg. 43568526

HH ADVANCE 9144W {CHB}  
**HH ADVANCE 2125Z**  
 HH MISS ADVANCE 0036X ET

HH ADVANCE 3113N 1ET {SOD,CHB}  
**CL 1 DOMINETTE 606S 1ET**  
 CL 1 DOMINETTE 0112K 1ET

HH ADVANCE 5104R {SOD,CHB}  
 HH MISS ADVANCE 7142T  
 HH ADVANCE 7101T {CHB}  
 HH MISS ADVANCE 4016P ET {DOD}  
 L1 DOMINO 99496 {SOD}  
 HH MS ADV 875H 1ET  
 CL 1 DOMINO 5131E {SOD}  
 CL 1 DOMINETTE 411

ACT. BW  
84  
 ADJ. WW  
607  
 ADJ. YW  
915  
 ADJ. REA  
9.20  
 REA/CWT.  
0.95  
 ADJ. IMF  
5.10

CED	BW	WW	YW	MILK	M&G	REA	MARB	CHBS	
+0.5	+4.1	+47	+73	+34	+57	+0.10	+0.13	+22	5.10

EYE PIGMENTATION LEFT **50%** RIGHT **50%**

Athletic built, square hipped powerful heifer. 513C is a pigmented powerhouse female that is out of our 606S donor and has been an eye catcher since day one.

- Ratioed 113 on marbling
- Maternal sisters sell as "Pick of the Flush" Lots 4005B and 4006B
- Sells open

## Lot 516C

### FS Miss Advance 516C

Cow — Feb. 13, 2015 — Reg. 43568529

HH ADVANCE 0002X {CHB}  
**HH ADVANCE 3006A**  
 HH MISS ADVANCE 1142Y

HH ADVANCE 1059Y {CHB}  
**FS MISS ADVANCE 323A**  
 HH MISS ADVANCE 0167X ET

HH ADVANCE 7026T ET  
 HH MISS ADVANCE 8163U  
 HH ADVANCE 8050U ET {CHB}  
 HH MISS ADVANCE 9176W ET  
 CL 1 DOMINO 7128T 1ET  
 HH MISS ADVANCE 7239T  
 HH ADVANCE 5161R {CHB}  
 HH MISS ADVANCE 365N

ACT. BW  
65  
 ADJ. WW  
660  
 ADJ. YW  
841  
 ADJ. REA  
8.54  
 REA/CWT.  
1.10  
 ADJ. IMF  
3.96

CED	BW	WW	YW	MILK	M&G	REA	MARB	CHBS	
+1.9	+1.3	+54	+79	+32	+59	+0.33	+0.08	+29	3.96

EYE PIGMENTATION LEFT **100%** RIGHT **100%**

516C is an outstanding young heifer and cow prospect. She is well built with plenty of muscle and depth along with having pigment and eye appeal.

- Ratioed 103 on WW
- Dam sells as Lot 323A
- Sells open

# FALL 2014 BRED HEIFERS

## Fall Bred Heifers

*Lot* **439B**  
{DLF,HYF,IEF}

**FS Miss Advance 439B**

Cow — Oct. 27, 2014 — Reg. 43546915

HH ADVANCE 9144W {CHB}  
**HH ADVANCE 2125Z**  
HH MISS ADVANCE 0036X ET

HH ADVANCE 8050U ET {CHB}  
**HH MISS ADVANCE 1284Y ET**  
HH MISS ADVANCE 6188S

HH ADVANCE 5104R {SOD,CHB} **ACT. BW**  
HH MISS ADVANCE 7142T **68**  
HH ADVANCE 7101T {CHB} **ADJ. WW**  
HH MISS ADVANCE 4016P ET {DOD} **513**  
L1 DOMINO 03571 {CHB} **ADJ. YW**  
HH MISS ADVANCE 365N **819**  
CL 1 DOMINO 320N {CHB,SOD} **ADJ. REA**  
HH MISS ADVANCE 4172P ET {DOD} **9.16**  
**REA/CWT.**  
**1.11**

CED	BW	WW	YW	MILK	M&G	REA	MARB	CHBS	ADJ. IMF
+2.0	+2.0	+46	+74	+35	+58	+11	+01	+22	3.96

**EYE PIGMENTATION** LEFT **100%** RIGHT **100%**

Well marked 2125Z daughter that has tons of class and performance to back her. Dam is a top 8050U daughter and also a sister to our HH Advance 1081Y herd sire.

• P.E. Dec. 17, 2015 to Mar. 17, 2016 to HH Advance 3006A

*Lot* **447B**  
{DLF,HYF,IEF}

**FS Miss Advance 447B** (Twin)

Cow — Nov. 5, 2014 — Reg. 43546923

CL 1 DOMINO 7128T 1ET  
**HH ADVANCE 1059Y** {CHB}  
HH MISS ADVANCE 7239T

HH ADVANCE 2168M  
**HH MISS ADVANCE 2298Z ET**  
HH MISS ADVANCE 8080U ET

HH ADVANCE 3113N 1ET {SOD,CHB} **ACT. BW**  
CL 1 DOMINETTE 0112K 1ET **55**  
CL 1 DOMINO 320N {CHB,SOD} **ADJ. WW**  
HH MISS ADVANCE 1088L {DOD} **440**  
HH ADVANCE 932J 1ET {SOD,CHB} **ADJ. YW**  
HH MISS ADVANCE 950J **685**  
L1 DOMINO 03571 {CHB} **ADJ. REA**  
HH MISS ADVANCE 365N **7.36**  
**REA/CWT.**  
**1.12**

CED	BW	WW	YW	MILK	M&G	REA	MARB	CHBS	ADJ. IMF
+0.6	+2.4	+49	+82	+26	+51	+28	+05	+22	3.61

**EYE PIGMENTATION** LEFT **80%** RIGHT **80%**

447B is little on the smaller end due to being born a twin, to a heifer. Her pedigree is loaded with top producing donors and awesome females. Her dam, HH Miss Advance 2298Z, is a super uddered, deep sided HH Miss Advance 8080U daughter that is a full sister to HH Advance 8050U. Lots of genetic potential in this heifer.

• Ratioed 107 on REA

• P.E. Dec. 17, 2015 to Mar. 17, 2016 to HH Advance 3006A

*Lot* **448B**  
{DLF,HYF,IEF}

**FS Miss Advance 448B**

Cow — Nov. 6, 2014 — Reg. 43546924

HH ADVANCE 9144W {CHB}  
**HH ADVANCE 2125Z**  
HH MISS ADVANCE 0036X ET

L1 DOMINO 08469 {CHB}  
**HH MISS ADVANCE 1292Y**  
HH MISS ADVANCE 9246W ET

HH ADVANCE 5104R {SOD,CHB} **ACT. BW**  
HH MISS ADVANCE 7142T **76**  
HH ADVANCE 7101T {CHB} **ADJ. WW**  
HH MISS ADVANCE 4016P ET {DOD} **538**  
L1 DOMINO 05516 {CHB} **ADJ. YW**  
L1 DOMINETTE 99374 **775**  
HH ADVANCE 5061R ET {CHB} **ADJ. REA**  
HH MISS ADVANCE 5030R {DOD} **7.51**  
**REA/CWT.**  
**0.98**

CED	BW	WW	YW	MILK	M&G	REA	MARB	CHBS	ADJ. IMF
+1.2	+3.5	+42	+67	+31	+52	-.08	+16	+22	4.29

**EYE PIGMENTATION** LEFT **20%** RIGHT **70%**

Big time maternal heifer that is stout built and has tons of eye appeal.

• P.E. Dec. 17, 2015 to Mar. 17, 2016 to HH Advance 3006A



**FS Miss Advance 450B**

*Lot* **450B**  
{DLF,HYF,IEF}

**FS Miss Advance 450B**

Cow — Nov. 7, 2014 — Reg. 43546926

CL 1 DOMINO 7128T 1ET  
**HH ADVANCE 1059Y** {CHB}  
HH MISS ADVANCE 7239T

HH ADVANCE 0149X {CHB}  
**FS MISS ADVANCE 267Z ET**  
HH MISS ADVANCE 4103P

HH ADVANCE 3113N 1ET {SOD,CHB} **ACT. BW**  
CL 1 DOMINETTE 0112K 1ET **65**  
CL 1 DOMINO 320N {CHB,SOD} **ADJ. WW**  
HH MISS ADVANCE 1088L {DOD} **608**  
HH ADVANCE 8019U ET {CHB} **ADJ. YW**  
HH MISS ADVANCE 7088T ET **885**  
HH ADVANCE 0024K {SOD} **ADJ. REA**  
HH MISS ADVANCE 266M **10.40**  
**REA/CWT.**  
**1.22**

CED	BW	WW	YW	MILK	M&G	REA	MARB	CHBS	ADJ. IMF
+2.1	+1.8	+55	+87	+27	+54	+44	+16	+27	5.20

**EYE PIGMENTATION** LEFT **100%** RIGHT **90%**

450B is a light birth weight, high maternal HH Advance 1059Y daughter. She is long bodied, stout and smooth made. Maternal granddam is our HH Miss Advance 4103P donor.

• Ratioed 106 on WW and 104 on YW

• Ratioed 113 on REA and 124 on marbling

• P.E. Dec. 17, 2015 to Mar. 17, 2016 to HH Advance 3006A

# FALL 2014 BRED HEIFERS



**FS Miss Advance 455B**

*Lat* **455B**  
{DLF,HYF,IEF}

**FS Miss Advance 455B** (Twin)  
Cow — Nov. 9, 2014 — Reg. 43546931

HH ADVANCE 8050U ET {CHB}  
**HH ADVANCE 1098Y** {CHB}  
HH MISS ADVANCE 9065W ET

CL 1 DOMINO 750T 1ET  
**HH MISS ADVANCE 1296Y ET**  
HH MISS ADVANCE 1088L {DOD}

L1 DOMINO 03571 {CHB}  
HH MISS ADVANCE 365N  
HH ADVANCE 7101T {CHB}  
HH MISS ADVANCE 1028L  
CL 1 DOMINO 477P {CHB,SOD}  
CL 1 DOMINETTE 221M {DOD}  
CL 1 DOMINO 824H {SOD}  
HH MS ADVANCE 8016H

CED	BW	WW	YW	MILK	M&G	REA	MARB	CHBS	ACT. BW	ADJ. WW	ADJ. YW	ADJ. REA	REA/CWT.	ADJ. IMF
+3.7	+2.0	+45	+65	+31	+53	+0.06	+0.13	+22	56	441	708	8.27	1.17	4.16

EYE PIGMENTATION LEFT **100%** RIGHT **100%**

Loads of volume, big topped, deep ribbed 1098Y daughter. She combines cow power and pigment and is very fancy made.

- Ratioed 104 on marbling
- P.E. Dec. 17, 2015 to Mar. 17, 2016 to HH Advance 3006A



**FS Miss Advance 475B**

*Lat* **475B**  
{DLF,HYF,IEF}

**FS Miss Advance 475B**  
Cow — Dec. 7, 2014 — Reg. 43546949

HH ADVANCE 8050U ET {CHB}  
**HH ADVANCE 1098Y** {CHB}  
HH MISS ADVANCE 9065W ET

BR L1 ADVANCE 6017 ET {CHB}  
**-S MISS ADVANCE DOM 4098P W1**  
HH MISS ADVANCE 4098P

L1 DOMINO 03571 {CHB}  
HH MISS ADVANCE 365N  
HH ADVANCE 7101T {CHB}  
HH MISS ADVANCE 1028L  
HH ADVANCE 688F 1ET {CHB}  
HH MISS ADV 786G 1ET  
HH ADVANCE 145L {SOD,CHB}  
HH MISS ADVANCE 912J

CED	BW	WW	YW	MILK	M&G	REA	MARB	CHBS	ACT. BW	ADJ. WW	ADJ. YW	ADJ. REA	REA/CWT.	ADJ. IMF
+2.7	+2.9	+54	+76	+26	+53	+0.47	.00	+25	78	585	711	10.05	1.40	4.01

EYE PIGMENTATION LEFT **100%** RIGHT **100%**

Goggled eyed, super fancy, long spined and backed by some great females. She is a top performing HH Advance 1098Y daughter.

- Ratioed 108 on REA
- P.E. Dec. 17, 2015 to Mar. 17, 2016 to HH Advance 3006A



**HH Advance 3006A**

Pasture service sire on the fall bred heifers

*Lat* **484B**  
{DLF,HYF,IEF}

**FS Miss Advance 484B**  
Cow — Dec. 25, 2014 — Reg. 43546957

HH ADVANCE 8050U ET {CHB}  
**HH ADVANCE 1081Y ET**  
HH MISS ADVANCE 6188S

HH ADVANCE 5212R {CHB}  
**FS MISS ADVANCE 216Z**  
HH MISS ADVANCE 345N

L1 DOMINO 03571 {CHB}  
HH MISS ADVANCE 365N  
CL 1 DOMINO 320N {CHB,SOD}  
HH MISS ADVANCE 4172P ET {DOD}  
CL 1 DOMINO 206M  
HH MISS ADVANCE 1028L  
L1 DOMINO 99496 {SOD}  
HH MISS ADVANCE 021K 1ET

CED	BW	WW	YW	MILK	M&G	REA	MARB	CHBS	ACT. BW	ADJ. WW	ADJ. YW	ADJ. REA	REA/CWT.	ADJ. IMF
+2.6	+3.3	+46	+82	+31	+54	+0.09	+0.10	+24	75	571	868	8.38	1.00	4.23

EYE PIGMENTATION LEFT **100%** RIGHT **100%**

475B is an extra fancy, well made heifer that is easy moving, stout and 100% pigmented.

- YW ratio 104
- IMF ratio 106
- P.E. Dec. 17, 2015 to Mar. 17, 2016 to HH Advance 3006A

# FALL HEIFER CALF PAIRS

## Fall Pairs

Three-in-ones with heifer calves at side.



**HH Miss Advance 4103P**  
Dam of Lot 313A

### Lot 313A

**FS Miss Advance 313A ET**  
Cow — Jan. 17, 2013 — Reg. 43362257

HH ADVANCE 8019U ET {CHB}  
**HH ADVANCE 0149X** {CHB}  
HH MISS ADVANCE 7088T ET

HH ADVANCE 0024K {SOD}  
**HH MISS ADVANCE 4103P**  
HH MISS ADVANCE 266M

L1 DOMINO 03571 {CHB}  
HH MISS ADVANCE 4098P  
HH ADVANCE 255M 1ET {CHB}  
HH MISS ADVANCE 9030J {DOD}

CL 1 DOMINO 824H {SOD}  
HH MISS ADVANCE 894H  
CL 1 DOMINO 986J {SOD}  
HH MISS ADVANCE 0029K

CED	BW	WW	YW	MILK	M&G	REA	MARB	CHBS
+0.7	+3.0	+61	+103	+23	+53	+42	+0.02	+23

**EYE PIGMENTATION** LEFT **80%** RIGHT **80%**

Heavy milking, powerful, young, good uddered cow that is deep sided and backed by many powerful females.

• P.E. Dec. 18, 2015 to Mar. 17, 2016 to HH Advance 4052B

**Lot 543C FS Miss Advance 543C** — Nov. 20, 2015 — 43654220

Sire: HH Advance 2214Z ET — BW 75 lbs.

EPDs: +1.3 / +2.2 / +55 / +91 / +28 / +55 / +.29 / +.06 / +22

### Lot 324A

**FS Miss Advance 324A**  
Cow — Feb. 5, 2013 — Reg. 43362265

HH ADVANCE 7034T ET {CHB}  
**HH ADVANCE 0081X ET** {CHB}  
HH MISS ADVANCE 5139R ET

CL 1 DOMINO 7128T 1ET  
**HH MISS ADVANCE 1162Y**  
HH MISS ADVANCE 6195S

L1 DOMINO 03571 {CHB}  
HH MISS ADVANCE 1088L {DOD}  
CL 1 DOMINO 2136M  
HH MS ADVANCE 8037H

HH ADVANCE 3113N 1ET {SOD,CHB}  
CL 1 DOMINETTE 0112K 1ET  
CL 1 DOMINO 320N {CHB,SOD}  
HH MISS ADVANCE 4098P

CED	BW	WW	YW	MILK	M&G	REA	MARB	CHBS
+3.3	+1.8	+50	+72	+30	+55	+11	+1.0	+22

**EYE PIGMENTATION** LEFT **50%** RIGHT **50%**

Young, great uddered, smooth built cow that is stacked with loads of great females in her pedigree.

• P.E. Jan. 4 to Mar. 17, 2016 to HH Advance 4101B

**Lot 556C FS Miss Advance 556C** — Dec. 8, 2015 — 43654256

Sire: HH Advance 2214Z ET — BW 65 lbs.

EPDs: +2.6 / +0.1 / +46 / +69 / +31 / +54 / +.13 / +.10 / +20

### Lot 220Z

**FS Miss Advance 220Z**  
Cow — Jan. 12, 2012 — Reg. 43272990

CL 1 DOMINO 206M  
**HH ADVANCE 5212R** {CHB}  
HH MISS ADVANCE 1028L

HH ADVANCE 872X  
**EL MISS ADVANCE 339N**  
HH MISS ADVANCE 2103M

CL 1 DOMINO 9126J 1ET {SOD,CHB}  
CL 1 DOMINETTE 825H {DOD}  
HH ADVANCE 6052F {SOD}  
HH MISS ADVANCE 731G

CL 1 DOMINO 603  
HH MISS ADVANCE 690U  
HH ADVANCE 0024K {SOD}  
HH MISS ADVANCE 021K 1ET

CED	BW	WW	YW	MILK	M&G	REA	MARB	CHBS
+1.9	+3.6	+53	+88	+22	+48	+33	+0.06	+27

**EYE PIGMENTATION** LEFT **100%** RIGHT **100%**

Fancy young cow with an incredible udder and good pigment. 220Z is very stylish, long bodied and deep made with tons of class.

• P.E. Dec. 18, 2015 to Mar. 17, 2016 to HH Advance 4052B

**Lot 526C FS Miss Advance 526C** — Nov. 3, 2015 — 43654194

Sire: HH Advance 1081Y ET — BW 81 lbs.

EPDs: +2.6 / +3.5 / +53 / +86 / +30 / +57 / +.25 / +.01 / +25

### Lot 1118Y

**FS Miss Advance 1118Y**  
Cow — Feb. 11, 2011 — Reg. 43207685

CL 1 DOMINO 206M  
**HH ADVANCE 5104R** {SOD,CHB}  
HH MISS ADVANCE 153L {DOD}

CL 1 DOMINO 477P {CHB,SOD}  
**-S MISS ADVANCE DOM 793G U176**  
HH MISS ADVANCE 793G {DOD}

CL 1 DOMINO 9126J 1ET {SOD,CHB}  
CL 1 DOMINETTE 825H {DOD}  
CL 1 DOMINO 986J {SOD}  
HH MISS ADVANCE 912J

CL 1 DOMINO 9126J 1ET {SOD,CHB}  
CL 1 DOMINETTE 839H {DOD}  
HH ADVANCE 3021C {SOD}  
HH MS ADVANCE 2043B

CED	BW	WW	YW	MILK	M&G	REA	MARB	CHBS
+0.7	+2.6	+52	+88	+33	+59	+28	+1.1	+27

**EYE PIGMENTATION** LEFT **100%** RIGHT **80%**

Powerful, heavy milking, pigmented HH Advance 5104R daughter. Her dam sold in our sale last year for \$7,000 to Ryan Bullinger.

• P.E. Dec. 18, 2015 to Mar. 17, 2016 to HH Advance 4101B

**Lot 540C FS Miss Advance 540C** — Nov. 18, 2015 — 43654216

Sire: HH Advance 0081X ET — BW 86 lbs.

EPDs: +2.5 / +3.6 / +58 / +91 / +33 / +62 / +.24 / +.08 / +27

# FALL BRED FEMALES

## Fall Bred Cows

### FEATURE DONOR DAM

*Lot* **9230W** {DLF,HYF,IEF} **FS Miss Advance 9230W**  
Cow — Aug. 20, 2009 — Reg. 43039930

HH ADVANCE 396N {CHB,SOD} CL 1 DOMINO 824H {SOD}  
**HH ADVANCE 6163S** HH MS ADVANCE 8037H  
 HH MISS ADVANCE 2111 M HH ADVANCE 767G 1ET {SOD,CHB}  
 CL 1 DOMINET 496 1ET  
 HH ADVANCE 145L {SOD,CHB} HH ADVANCE 6052F {SOD}  
**HH MISS ADVANCE 4077P** {DOD} HH MISS ADVANCE 766G  
 HH MS ADVANCE 0028K 1ET HH ADVANCE 7001G 1ET  
 HH MS ADVANCE 4043D

CED	BW	WW	YW	MILK	M&G	REA	MARB	CHBS
+0.3	+3.5	+45	+83	+28	+50	+34	.00	+20

EYE PIGMENTATION LEFT **100%** RIGHT **100%**

Lots of eye appeal in this producing donor. She is red to the ground, great uddered and long spined and has great extension up through her front end. Bred for an early fall calf.

- Son sells as Lot 436B
- P.E. Dec. 18, 2015 to Mar. 17, 2016 to HH Advance 4052B (service observed Dec. 20)



**CL 1 Dominette 606S 1ET**  
Dam of Lot 428B



**HH Miss Advance 4103P**  
Maternal granddam of Lot 422B

*Lot* **428B** {DLF,HYF,IEF} **FS Miss Advance 428B ET**  
Cow — Feb. 13, 2014 — Reg. 43468316

CL 1 DOMINO 860U {CHB} CL 1 DOMINO 637S 1ET {CHB}  
**CL 1 DOMINO 297Z** CL 1 DOMINETTE 5142R {DOD}  
 CL 1 DOMINETTE 9134W 1ET {DOD} CL 1 DOMINO 732T {CHB}  
 CL 1 DOMINETTE 475P  
 HH ADVANCE 3113N 1ET {SOD,CHB} L1 DOMINO 99496 {SOD}  
**CL 1 DOMINETTE 606S 1ET** HH MS ADV 875H 1ET  
 CL 1 DOMINETTE 0112K 1ET CL 1 DOMINO 5131E {SOD}  
 CL 1 DOMINETTE 411

CED	BW	WW	YW	MILK	M&G	REA	MARB	CHBS
+0.8	+3.8	+52	+82	+34	+60	+30	+1.0	+23

EYE PIGMENTATION LEFT **100%** RIGHT **100%**

Well marked, extra fancy, deep sided and stout young CL 1 Domino 297Z daughter out of the 606S donor.

- Scanned with a REA ratio of 106 and IMF ratio of 110
- P.E. Dec. 18, 2015 to Mar. 17, 2016 to HH Advance 4101B

*Lot* **422B** {DLF,HYF,IEF} **FS Miss Advance 422B**  
Cow — Feb. 7, 2014 — Reg. 43466180

CL 1 DOMINO 7128T 1ET HH ADVANCE 3113N 1ET {SOD,CHB}  
**HH ADVANCE 1059Y** {CHB} CL 1 DOMINETTE 0112K 1ET  
 HH MISS ADVANCE 7239T CL 1 DOMINO 320N {CHB,SOD}  
 HH MISS ADVANCE 1088L {DOD}  
 HH ADVANCE 4055P {CHB} HH ADVANCE 145L {SOD,CHB}  
**FS MISS ADVANCE 1109Y** HH MISS ADVANCE 9065J {DOD}  
 HH MISS ADVANCE 4103P HH ADVANCE 0024K {SOD}  
 HH MISS ADVANCE 266M

CED	BW	WW	YW	MILK	M&G	REA	MARB	CHBS
+1.7	+3.1	+52	+85	+28	+54	+32	+0.9	+27

EYE PIGMENTATION LEFT **80%** RIGHT **60%**

Well built, powerful, easy fleshing HH Advance 1059Y daughter with a very maternal pedigree. Lots 422B and 428B are spring heifers that were held over for fall breeding.

- 103 ratio on YW
- 102 ratio on marbling
- P.E. Dec. 18, 2015 to Mar. 17, 2016 to HH Advance 4101B

# FALL BRED COWS

## Lot 349A {DLF,HYF,IEF}

### FS Miss Advance 349A

Cow — Oct. 17, 2013 — Reg. 43444408

HH ADVANCE 8050U ET {CHB}  
**HH ADVANCE 1098Y** {CHB}  
HH MISS ADVANCE 9065W ET

HH ADVANCE 5104R {SOD,CHB}  
**FS MISS ADVANCE 1113Y**  
-S MISS ADVANCE DOM 4098P W1

L1 DOMINO 03571 {CHB}  
HH MISS ADVANCE 365N  
HH ADVANCE 7101T {CHB}  
HH MISS ADVANCE 1028L  
CL 1 DOMINO 206M  
HH MISS ADVANCE 153L {DOD}  
BR L1 ADVANCE 6017 ET {CHB}  
HH MISS ADVANCE 4098P

CED	BW	WW	YW	MILK	M&G	REA	MARB	CHBS
+2.3	+2.7	+54	+87	+30	+58	+43	-.05	+26

EYE PIGMENTATION LEFT **100%** RIGHT **100%**

A big, stout, goggled-eyed HH Advance 1098Y daughter that has many great, proven females in her pedigree.

• P.E. Dec. 18, 2015 to Mar. 17, 2016 to HH Advance 4052B

## Lot 334A

### FS Miss Advance 334A

Cow — Feb. 28, 2013 — Reg. 43362274

HH ADVANCE 7034T ET {CHB}  
**HH ADVANCE 0081X ET** {CHB}  
HH MISS ADVANCE 5139R ET

HH ADVANCE 179L  
**EL MS ADVANCE 323N**  
HH MISS ADVANCE 0100K

L1 DOMINO 03571 {CHB}  
HH MISS ADVANCE 1088L {DOD}  
CL 1 DOMINO 2136M  
HH MS ADVANCE 8037H  
HH ADVANCE 6052F {SOD}  
HH MISS ADVANCE 769G {DOD}  
CL 1 DOMINO 7120G ET  
HH MS ADVANCE 8082H

CED	BW	WW	YW	MILK	M&G	REA	MARB	CHBS
+2.1	+3.7	+51	+73	+18	+43	-.01	+19	+23

EYE PIGMENTATION LEFT **100%** RIGHT **90%**

Pigment, power and maternal strength come together in this well built 0081X daughter.

• P.E. Dec. 18, 2015 to Mar. 17, 2016 to HH Advance 4101B

## Lot 345A {DLF,HYF,IEF}

### FS Miss Advance 345A

Cow — Aug. 23, 2013 — Reg. 43418115

HH ADVANCE 8050U ET {CHB}  
**HH ADVANCE 1098Y** {CHB}  
HH MISS ADVANCE 9065W ET

L1 DOMINO 08469 {CHB}  
**HH MISS ADVANCE 1240Y**  
HH MISS ADVANCE 9136W

L1 DOMINO 03571 {CHB}  
HH MISS ADVANCE 365N  
HH ADVANCE 7101T {CHB}  
HH MISS ADVANCE 1028L  
L1 DOMINO 05516 {CHB}  
L1 DOMINETTE 99374  
HH ADVANCE 4140P {SOD,CHB}  
HH MISS ADVANCE 1028L

CED	BW	WW	YW	MILK	M&G	REA	MARB	CHBS
+4.6	+1.3	+44	+66	+26	+48	+17	+.24	+24

EYE PIGMENTATION LEFT **100%** RIGHT **100%**

One of our favorites in the sale. 345A is a goggle-eyed HH Advance 1098Y daughter that is loaded with style and class.

• P.E. Dec. 18, 2015 to Mar. 17, 2016 to HH Advance 4052B

## Lot 328A

### FS Miss Advance 328A

Cow — Feb. 18, 2013 — Reg. 43362269

HH ADVANCE 8050U ET {CHB}  
**HH ADVANCE 1081Y ET**  
HH MISS ADVANCE 6188S

CL 1 DOMINO 732T {CHB}  
**CL 1 DOMINETTE 084X**  
CL 1 DOMINETTE 4126P

L1 DOMINO 03571 {CHB}  
HH MISS ADVANCE 365N  
CL 1 DOMINO 320N {CHB,SOD}  
HH MISS ADVANCE 4172P ET {DOD}  
CL 1 DOMINO 590R {CHB}  
CL 1 DOMINETTE 507R {DOD}  
CL1 DOMINO 1116L  
CL1 DOMINETTE 193L

CED	BW	WW	YW	MILK	M&G	REA	MARB	CHBS
+3.9	+1.6	+43	+67	+33	+55	+09	-.23	+14

EYE PIGMENTATION LEFT **80%** RIGHT **80%**

Fancy, well made HH Advance 1081Y daughter that has a beautiful udder and lots of cow power in her pedigree.

• Powerful young daughter also sells as Lot 509C

• P.E. Dec. 18, 2015 to Mar. 17, 2016 to HH Advance 4101B

## Lot 335A

### FS Miss Advance 335A

Cow — Mar. 10, 2013 — Reg. 43362275

HH ADVANCE 8050U ET {CHB}  
**HH ADVANCE 1081Y ET**  
HH MISS ADVANCE 6188S

CL 1 DOMINO 8165U 1ET {CHB}  
**CL1 DOMINETTE 1109Y**  
CL 1 DOMINETTE 9146W 1ET

L1 DOMINO 03571 {CHB}  
HH MISS ADVANCE 365N  
CL 1 DOMINO 320N {CHB,SOD}  
HH MISS ADVANCE 4172P ET {DOD}  
CL 1 DOMINO 9126J 1ET {SOD,CHB}  
CL 1 DOMINETTE 876H 1ET  
CL 1 DOMINO 732T {CHB}  
CL 1 DOMINETTE 475P

CED	BW	WW	YW	MILK	M&G	REA	MARB	CHBS
+3.3	+2.5	+51	+78	+35	+60	+14	+.08	+24

EYE PIGMENTATION LEFT **90%** RIGHT **90%**

Powerful, moderate framed, big time maternal and performance in this HH Advance 1081Y daughter. 335A was one of the top dams last year on her first calf—WR 107, YR 107, REA 108, Marbling 102 and scrotal 42 cm.

• P.E. Dec. 18, 2015 to Mar. 17, 2016 to HH Advance 4101B

## Lot 323A

### FS Miss Advance 323A

Cow — Feb. 3, 2013 — Reg. 43362264

CL 1 DOMINO 7128T 1ET  
**HH ADVANCE 1059Y** {CHB}  
HH MISS ADVANCE 7239T

HH ADVANCE 5161R {CHB}  
**HH MISS ADVANCE 0167X ET**  
HH MISS ADVANCE 365N

HH ADVANCE 3113N 1ET {SOD,CHB}  
CL 1 DOMINETTE 0112K 1ET  
CL 1 DOMINO 320N {CHB,SOD}  
HH MISS ADVANCE 1088L {DOD}  
HH ADVANCE 396N {CHB,SOD}  
HH MISS ADVANCE 2118M  
HH ADVANCE 0024K {SOD}  
HH MISS ADVANCE 103L

CED	BW	WW	YW	MILK	M&G	REA	MARB	CHBS
+0.7	+2.6	+47	+74	+30	+54	+46	-.03	+23

EYE PIGMENTATION LEFT **100%** RIGHT **80%**

Very sound made, long bodied, pigmented, easy fleshing HH Advance 1059Y daughter. Her pedigree is stacked with high performing, maternal females.

• P.E. Dec. 18, 2015 to Mar. 17, 2016 to HH Advance 4052B



# FALL BRED COWS

## Lot 321A

### FS Miss Advance 321A

Cow — Feb. 1, 2013 — Reg. 43362262

HH ADVANCE 8050U ET {CHB}  
**HH ADVANCE 1081Y ET**  
 HH MISS ADVANCE 6188S

CL 1 DOMINO 2136M  
**HH MISS ADVANCE 6103S**  
 HH MISS ADVANCE 269K {DOD}

L1 DOMINO 03571 {CHB}  
 HH MISS ADVANCE 365N  
 CL 1 DOMINO 320N {CHB,SOD}  
 HH MISS ADVANCE 4172P ET {DOD}  
 CL 1 DOMINO 9126J 1ET {SOD,CHB}  
 CL 1 DOMINETTE 8124H 2ET  
 HH ADVANCE 0024K {SOD}  
 HH MISS ADVANCE 0064K

CED	BW	WW	YW	MILK	M&G	REA	MARB	CHBS
+5.6	-0.4	+40	+60	+28	+48	+17	-.08	+16

EYE PIGMENTATION LEFT **50%** RIGHT **50%**

Low birth weight, big-time calving ease young female that is out of a top producing donor that produced many great females for us and Holden.

- Maternal sister sells as Lot 1108Y
- Fancy daughter sells as Lot 505C
- P.E. Dec. 18, 2015 to Mar. 17, 2016 to HH Advance 4101B

## Lot 1108Y

### FS Miss Advance 1108Y

Cow — Jan. 19, 2011 — Reg. 43211057

HH ADVANCE 145L {SOD,CHB}  
**HH ADVANCE 4055P** {CHB}  
 HH MISS ADVANCE 9065J {DOD}

CL 1 DOMINO 2136M  
**HH MISS ADVANCE 6103S**  
 HH MISS ADVANCE 269K {DOD}

HH ADVANCE 6052F {SOD}  
 HH MISS ADVANCE 766G  
 KB L1 DOMINO 519  
 HH MS ADV 5023 1ET  
 CL 1 DOMINO 9126J 1ET {SOD,CHB}  
 CL 1 DOMINETTE 8124H 2ET  
 HH ADVANCE 0024K {SOD}  
 HH MISS ADVANCE 0064K

CED	BW	WW	YW	MILK	M&G	REA	MARB	CHBS
+4.3	+1.2	+45	+68	+23	+45	+14	+19	+25

EYE PIGMENTATION LEFT **100%** RIGHT **90%**

Easy fleshing, pigmented, great uddered HH Advance 4055P daughter that is backed by loads of cow power.

- P.E. Dec. 18, 2015 to Mar. 17, 2016 to HH Advance 4101B

## Lot 262Z

### FS Miss Advance 262Z

Cow — Nov. 27, 2012 — Reg. 43350636

HH ADVANCE 7101T {CHB}  
**HH ADVANCE 9075W ET** {CHB}  
 HH MISS ADVANCE 1028L

HH ADVANCE 1117L ET  
**EL MISS ADVANCE 535R**  
 HH MISS ADVANCE 332N

HH ADVANCE 4140P {SOD,CHB}  
 HH MISS ADVANCE 1121L  
 HH ADVANCE 6052F {SOD}  
 HH MISS ADVANCE 731G

HH ADVANCE 836H {SOD}  
 HH MISS ADVANCE 339C {DOD}  
 CL1 DOMINO 180L {CHB}  
 HH MISS ADVANCE 132L

CED	BW	WW	YW	MILK	M&G	REA	MARB	CHBS
+2.4	+3.1	+45	+77	+26	+49	+24	+04	+22

EYE PIGMENTATION LEFT **100%** RIGHT **100%**

Good pigmented, moderate framed HH Advance 9075W cow that is good uddered and easy doing.

- P.E. Dec. 18, 2015 to Mar. 17, 2016 to HH Advance 4101B

## Lot 057X

### CL 1 Dominette 057X

Cow — Jan. 12, 2010 — Reg. 43082258

CL 1 DOMINO 590R {CHB}  
**CL 1 DOMINO 732T** {CHB}  
 CL 1 DOMINETTE 507R {DOD}

CL 1 DOMINO 212M {CHB,SOD}  
**CL 1 DOMINETTE 6121S**  
 CL 1 DOMINETTE 2132M

CL 1 DOMINO 246M {SOD}  
 CL 1 DOMINETTE 258M  
 HH ADVANCE 3113N 1ET {SOD,CHB}  
 CL1 DOMINETTE 1120L

CL 1 DOMINO 9126J 1ET {SOD,CHB}  
 CL 1 DOMINETTE 8104H 1ET  
 CL 1 DOMINO 8146H 1ET {CHB}  
 CL 1 DOMINETTE 744G {DOD}

CED	BW	WW	YW	MILK	M&G	REA	MARB	CHBS
+2.1	+2.8	+52	+86	+30	+56	+46	.00	+26

EYE PIGMENTATION LEFT **100%** RIGHT **100%**

Nice uddered, pigmented, long bodied CL 1 Domino 732T daughter.

- Average WW ratio of 104 on three head
- P.E. Dec. 18, 2015 to Mar. 17, 2016 to HH Advance 4101B

## Lot 216Z

### FS Miss Advance 216Z

Cow — Jan. 9, 2012 — Reg. 43272988

CL 1 DOMINO 206M  
**HH ADVANCE 5212R** {CHB}  
 HH MISS ADVANCE 1028L

L1 DOMINO 99496 {SOD}  
**HH MISS ADVANCE 345N**  
 HH MISS ADVANCE 021K 1ET

CL 1 DOMINO 9126J 1ET {SOD,CHB}  
 CL 1 DOMINETTE 825H {DOD}  
 HH ADVANCE 6052F {SOD}  
 HH MISS ADVANCE 731G

L1 DOMINO 97349  
 L1 DOMINETTE 95369 {DOD}  
 HH ADVANCE 885H {CHB}  
 HH MISS ADVANCE 415D {DOD}

CED	BW	WW	YW	MILK	M&G	REA	MARB	CHBS
+2.2	+2.9	+41	+73	+26	+46	+08	+23	+24

EYE PIGMENTATION LEFT **100%** RIGHT **50%**

Nice uddered, heavy milking, well built HH Advance 5212R daughter.

- P.E. Dec. 18, 2015 to Mar. 17, 2016 to HH Advance 4101B

## Lot 9233W

### HH Miss Advance 9233W

Cow — Aug. 30, 2009 — Reg. 43039933

HH ADVANCE 396N {CHB,SOD}  
**HH ADVANCE 6163S**  
 HH MISS ADVANCE 2111 M

L1 DOMINO 03571 {CHB}  
**HH MISS ADVANCE 7124T**  
 HH MISS ADVANCE 342N

CL 1 DOMINO 824H {SOD}  
 HH MS ADVANCE 8037H  
 HH ADVANCE 767G 1ET {SOD,CHB}  
 CL 1 DOMINET 496 1ET

L1 DOMINO 01384 {CHB}  
 L1 DOMINETTE 00532  
 HH ADVANCE 0024K {SOD}  
 HH MISS ADVANCE 1025L

CED	BW	WW	YW	MILK	M&G	REA	MARB	CHBS
+1.1	+3.1	+45	+72	+26	+49	+24	-.03	+17

EYE PIGMENTATION LEFT **30%** RIGHT **100%**

Big, stout, maternal, pigmented HH Advance 6163S daughter.

- P.E. Dec. 18, 2015 to Mar. 17, 2016 to HH Advance 4052B

# Flying S Herefords

Thank you for taking the time and having an interest in our program!

## FLYING S HEREFORDS

James Strode 214.533.9669 • James@flyingsherefords.com

Jim Strode 214.801.9669

Ranch located southwest of Fort Worth at Paluxy, Texas

[www.flyingsherefords.com](http://www.flyingsherefords.com)

THINK LINE ONE...THINK FLYING S HEREFORDS!

# Amino GAIN

COMMAND BEST COST OF GAIN™

DELIVERS AS  
EXPECTED

Decades of **advancement** have been made in **herd genetics**, with **few innovative nutritional concepts** introduced during the same period. Now, there is a **feeding program capable of supporting the growth capacity** our beef industry has worked hard to develop. **And, that program is AminoGain®.**

- Innovative feeding concept
- Optimize gain and feed efficiency
- Reduce cost of production
- Create desired condition at high growth rate

For more information about how you can capture AminoGain performance, contact:



**Tony Ballinger** ADM Alliance Nutrition  
phone (817) 371-4520  
Ballinger@adm.com



*Flying S bulls developed on AminoGain.*

ADMAAnimalNutrition.com

(866) 666-7626 • AN\_BeefHelp@adm.com

ADM Alliance Nutrition, Inc., Quincy, IL






P.O. Box 31684  
Edmond, OK 73003

FIRST CLASS MAIL

TIME DATED MATERIAL: PLEASE DO NOT DELAY

SOUTHWEST TYPESTYLES  
405.381.3591 

# FLYING S HEREFORDS

## *Line One*

PRODUCTION SALE



**Tuesday, March 22nd**

Ranch located southwest of Fort Worth at Paluxy, Texas

[www.flyingsherefords.com](http://www.flyingsherefords.com)